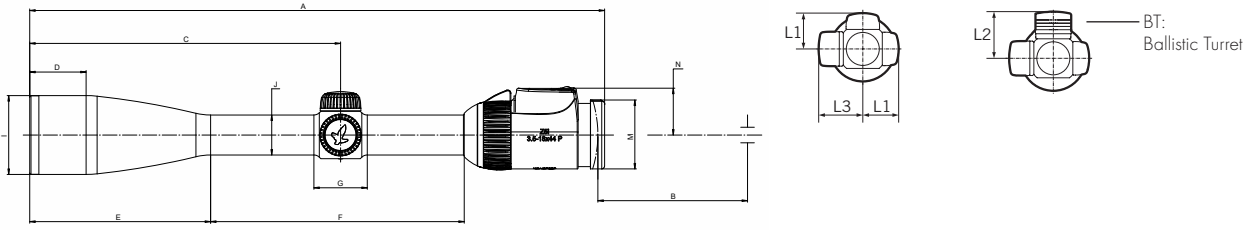


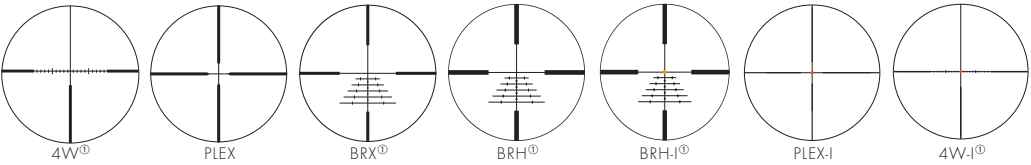
DIMENSIONS / DIMENSIONS / DIMENSIONI / DIMENSIONES



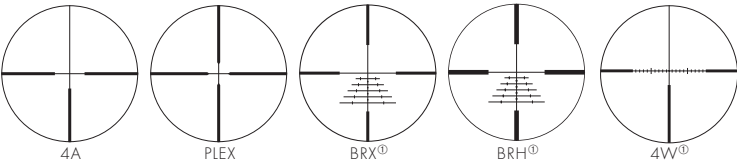
	Z5	Z5	Z5	Z5i	Z5i	Z5i	Z3	Z3	Z3
	2.4-12x50 (BT)	3.5-18x44 P (BT)	5-25x52 P (BT)	2.4-12x50 (BT)	3.5-18x44 P (BT)	5-25x52 P (BT)	3-9x36	3-10x42	4-12x50 (BT)
A	334 mm/13.15 in	363 mm/14.29 in	371 mm/14.61 in	336 mm/13.23 in	365 mm/14.37 in	373 mm/14.69 in	308 mm/12.13 in	321 mm/12.64 in	350 mm/13.78 in
B	95 mm/3.74 in	95 mm/3.74 in	95 mm/3.74 in	95 mm/3.74 in	95 mm/3.74 in	95 mm/3.74 in	90 mm/3.54 in	90 mm/3.54 in	90 mm/3.54 in
C	170 mm/6.69 in	197 mm/7.76 in	205 mm/8.07 in	170 mm/6.69 in	197 mm/7.76 in	205 mm/8.07 in	146 mm/5.75 in	160 mm/6.30 in	189 mm/7.44 in
D	36 mm/1.42 in	36 mm/1.42 in	39 mm/1.54 in	36 mm/1.42 in	36 mm/1.42 in	39 mm/1.54 in	34 mm/1.34 in	35 mm/1.38 in	36 mm/1.42 in
E	99 mm/3.89 in	115 mm/4.53 in	122 mm/4.80 in	99 mm/3.89 in	115 mm/4.53 in	122 mm/4.80 in	80 mm/3.15 in	97 mm/3.82 in	117 mm/4.61 in
F	149 mm/5.87 in	161 mm/6.34 in	162 mm/6.38 in	149 mm/5.87 in	161 mm/6.34 in	162 mm/6.38 in	136 mm/5.35 in	135 mm/5.31 in	142 mm/5.59 in
G	34 mm/1.34 in	34 mm/1.34 in	34 mm/1.34 in	34 mm/1.34 in	34 mm/1.34 in	34 mm/1.34 in	34 mm/1.34 in	34 mm/1.34 in	34 mm/1.34 in
I	56 mm/2.20 in	50 mm/1.97 in	58 mm/2.28 in	56 mm/2.20 in	50 mm/1.97 in	58 mm/2.28 in	42 mm/1.65 in	48 mm/1.89 in	56 mm/2.20 in
J	25.4 mm/1.00 in	25.4 mm/1.00 in	25.4 mm/1.00 in	25.4 mm/1.00 in	25.4 mm/1.00 in	25.4 mm/1.00 in	25.4 mm/1.00 in	25.4 mm/1.00 in	25.4 mm/1.00 in
L1	27 mm/1.06 in	27 mm/1.06 in	27 mm/1.06 in	27 mm/1.06 in	27 mm/1.06 in	27 mm/1.06 in	27 mm/1.06 in	27 mm/1.06 in	27 mm/1.06 in
L2	37 mm/1.46 in	37 mm/1.46 in	37 mm/1.46 in	37 mm/1.46 in	37 mm/1.46 in	37 mm/1.46 in	-	-	37 mm/1.46 in
L3	-	34 mm/1.34 in	34 mm/1.34 in	-	34 mm/1.34 in	34 mm/1.34 in	-	-	-
M	43 mm/1.69 in	43 mm/1.69 in	43 mm/1.69 in	43 mm/1.69 in	43 mm/1.69 in	43 mm/1.69 in	40 mm/1.57 in	40 mm/1.57 in	40 mm/1.57 in
N	-	-	-	30 mm/1.18 in	30 mm/1.18 in	30 mm/1.18 in	-	-	-
Objective filter thread Filet de raccord pour filtre Obiettivo filettatura filtro Rosca del filtro del objetivo	M 52x0.75	M 46x0.75	M 54x0.75	M 52x0.75	M 46x0.75	M 54x0.75	M 39x0.75	M 44x0.75	M 52x0.75

RETICLES / RETICULES / RETICOLI / RETÍCULAS

Z5/Z5i



Z3



SWAROVSKI  
OPTIK

Swarovski Optik North America Ltd.  
2 Slater Road, Cranston, RI 02920  
Tel. 800-426-3089, Fax 877-287-8517  
info-us@swarovskioptik.com  
SWAROVSKIOPTIK.COM

For countries other than US and Canada please contact  
Tel. 00800/32425056  
customerservice@swarovskioptik.com

BA-696-02, 03/2023

① See separate user manuals.  
Voir mode d'emploi séparé.  
Vedi a parte il manuale d'uso.  
Véanse las instrucciones de funcionamiento que se adjuntan por separado.

Z5/Z5i/Z3

SUBTENSION DIMENSION / COTES DE RECOUVREMENT / MISURE DEL RETICOLO /  
DIMENSIONES DE COBERTURA DE LAS RETÍCULAS

EN SUBTENSION DIMENSIONS PROGRAM

The free subtenison dimensions program allows you to quickly obtain all the precise subtenison dimensions for your reticle for all SWAROVSKI OPTIK rifle scopes. These values can be calculated not only for all optional magnifications but also for different distances. All the calculated subtenison dimensions are given in imperial or metric units, as well as in MOA and MIL units, and can be printed out afterwards.

A detailed description is available at  
SUBTENSIONS.SWAROVSKIOPTIK.COM

FR PROGRAMME DE CALCUL DES VALEURS DE RECOUVREMENT

Le programme gratuit de calcul des valeurs de recouvrement vous permet d'obtenir rapidement les valeurs de recouvrement exactes de votre réticule pour toutes les lunettes de visée SWAROVSKI OPTIK. Ces valeurs peuvent être calculées pour tous les grossissements optionnels, mais également pour différentes distances. Toutes les valeurs de recouvrement sont fournies en unités impériales ou métriques, ainsi qu'en unités MOA et MIL, et peuvent être imprimées ultérieurement.

Une description détaillée du programme est disponible à l'adresse  
SUBTENSIONS.SWAROVSKIOPTIK.COM

IT PROGRAMMA PER LE DISTANZE DI SOTTOTENSIONE

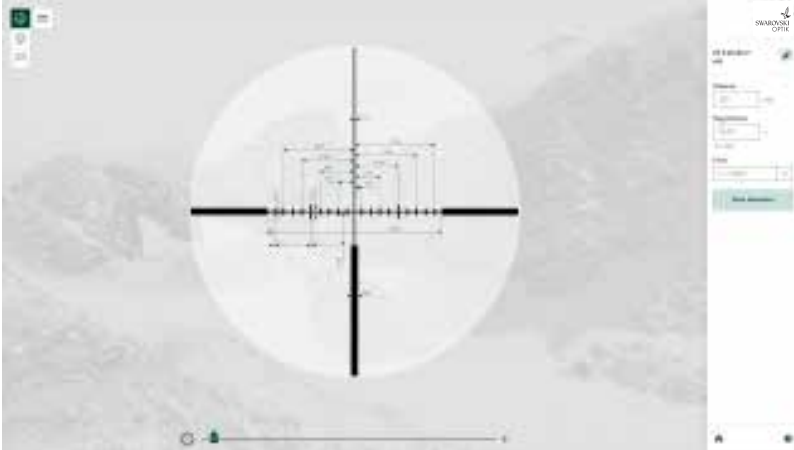
Il programma gratuito per calcolare le distanze di sottotensione consente di ottenere i valori corretti per i reticoli di tutti i cannocchiali da puntamento SWAROVSKI OPTIK. Questi valori possono essere calcolati non solo per tutti i possibili ingrandimenti, ma anche per diverse distanze. Tutte le distanze di sottotensione calcolate sono fornite in unità di misura metriche o imperiali e anche in unità MOA e MIL e possono essere successivamente stampate.

Per una descrizione dettagliata, visitate  
SUBTENSIONS.SWAROVSKIOPTIK.COM

ES PROGRAMA DE VALORES DE SUBTENSIÓN

El programa de valores de subtensión gratuito le permite obtener rápidamente todos los valores de subtensión para su retícula y cualquier visor SWAROVSKI OPTIK. Estos valores se pueden calcular no solo para los distintos aumentos, sino también para diferentes distancias. Todos los valores de subtensión calculados aparecen en sistema métrico o imperial, así como en MOA y MIL, y se pueden imprimir posteriormente.

Puede encontrar una descripción más detallada en  
SUBTENSIONS.SWAROVSKIOPTIK.COM



TECHNICAL DATA / DONNÉES TECHNIQUES / DATI TECNICI / DATOS TÉCNICOS

Parallax-free at 109 yds/100 m · Abscense de parallaxe sur 100 m · Esente da parallasse a 100 m · Libre de paralaje a 100 m  
inert gas filling · remplissage de gaz inerte · riempimento con gas inerte · relleno de gas inerte

<div><div>EN</div><div>Model</div></div>	<div><div>FR</div><div>Modèle</div></div>	<div><div>IT</div><div>Modello</div></div>	<div><div>ES</div><div>Modelo</div></div>	<div>Z5</div> <div>2.4-12x50 (BT)</div>	<div>Z5</div> <div>3.5-18x44 P (BT)</div>	<div>Z5</div> <div>5-25x52 P (BT)</div>	<div>Z5i</div> <div>2.4-12x50 (BT)</div>	<div>Z5i</div> <div>3.5-18x44 P (BT)</div>	<div>Z5i</div> <div>5-25x52 P (BT)</div>	<div>Z3</div> <div>3-9x36</div>	<div>Z3</div> <div>3-10x42</div>	<div>Z3</div> <div>4-12x50 (BT)</div>
Magnification	Grossissement	Ingrandimento	Aumentos	2.4-12x	3.5-18x	5-25x	2.4-12x	3.5-18x	5-25x	3-9x	3.3-10x	4-12x
Central tube diameter	Diamètre du tube central	Diametro tubo centrale	Diámetro de tubo central	25.4 mm/1 in	25.4 mm/1 in	25.4 mm/1 in	25.4 mm/1 in	25.4 mm/1 in	25.4 mm/1 in	25.4 mm/1 in	25.4 mm/1 in	25.4 mm/1 in
Effective objective lens diameter	Diamètre effectif de l'objectif	Diametro utile dell'obiettivo	Diámetro efectivo del objetivo	23-50 mm	35-44 mm	48-52 mm	23-50 mm	35-44 mm	48-52 mm	36 mm	42 mm	50 mm
Exit pupil diameter	Diamètre de la pupille de sortie	Diametro della pupilla d'uscita	Diámetro de la pupila de salida	10-4.1 mm	10-2.4 mm	9.6-2.1 mm	10-4.1 mm	10-2.4 mm	9.6-2.1 mm	12-4 mm	12.6-4.2 mm	12.5-4.2 mm
Exit pupil distance (Eye relief)	Distance de la pupille de sortie (Distance oeil-oculaire)	Distanza della pupilla d'uscita	Distancia de la pupila de salida (Distancia del ocular)	95 mm/3.74 in	95 mm/3.74 in	95 mm/3.74 in	95 mm/3.74 in	95 mm/3.74 in	95 mm/3.74 in	90 mm/3.54 in	90 mm/3.54 in	90 mm/3.54 in
Field of view	Champ de vision reel	Campo visivo	Campo de visión	15.3-3 m/100 m 45.9-9 ft/100 yds	10-2 m/100 m 30-6 ft/100 yds	7.3-1.5 m/100 m 21.9-4.5 ft/100 yds	15.3-3 m/100 m 45.9-9 ft/100 yds	10-2 m/100 m 30-6 ft/100 yds	7.3-1.5 m/100 m 21.9-4.5 ft/100 yds	13-4.5 m/100 m 39-13.5 ft/100 yds	11-3.9 m/100 m 33-11.7 ft/100 yds	9.7-3.3 m/100 m 29.1-9.9 ft/100 yds
Field of view (degrees)	Champ de vision reel (dégres)	Campo visivo (gradi)	Campo de visión (grados)	8.7-1.75°	5.8-1.17°	4.2-0.84°	8.7-1.75°	5.8-1.17°	4.2-0.84°	7.4-2.6°	6.3-2.2°	5.5-1.9°
Field of view, apparent (degrees)	Champ de vision apparent (dégres)	Campo visivo soggettivo (gradi)	Campo de visión, aparente (grados)	21.5°	21.5°	21.5°	21.5°	21.5°	21.5°	22.7°	22.7°	22.7°
Dioptr adjustment	Ajustement dioptrique	Compensazione diottrica	Ajuste de dioptrías	-3 to +2 dpt	-3 to +2 dpt	-3 to +2 dpt	-3 to +2 dpt	-3 to +2 dpt	-3 to +2 dpt	-2.5 to +2.5 dpt	-2.5 to +2.5 dpt	-2.5 to +2.5 dpt
Light transmission	Transmission de lumière	Trasmissione di luce	Transmisión de la luz	92%	90%	90%	92%	90%	90%	90%	90%	90%
Twilight factor based on ISO 14132-1	Indice crepusculaire (ISO 14132-1)	Valore crepuscolare secondo ISO 14132-1	Factor crepuscular según ISO 14132-1	6.8-24.5	9.9-28.1	14.1-36	6.8-24.5	9.9-28.1	14.1-36	8.5-18	9.3-20.5	11.3-24.5
Impact point correction/click	Correction du point d'impact/clic	Click di correzione per punto di impatto	Corrección punto de impacto/clic	7 mm/100 m 0.25 in/100 yds	7 mm/100 m 0.25 in/100 yds	7 mm/100 m 0.25 in/100 yds	7 mm/100 m 0.25 in/100 yds	7 mm/100 m 0.25 in/100 yds	7 mm/100 m 0.25 in/100 yds	7 mm/100 m 0.25 in/100 yds	7 mm/100 m 0.25 in/100 yds	7 mm/100 m 0.25 in/100 yds
Max. elevation/windage adjustment range	Plage de réglage max. de l'élévation/de la dérive	Massima escursione di regolazione per elevazione e deriva laterale del vento	Rango máx. ajuste de elevación/resistencia al viento	2.5/1.4 m/100 m 90/50 in/100 yds	1.6/1 m/100 m 58/36 in/100 yds	1.2/0.7 m/100 m 43/25 in/100 yds	2.5/1.4 m/100 m 90/50 in/100 yds	1.6/1 m/100 m 58/36 in/100 yds	1.2/0.7 m/100 m 43/25 in/100 yds	1.6/1.6 m/100 m 58/58 in/100 yds	1.4/1.4 m/100 m 50/50 in/100 yds	1.2/1.2 m/100 m 43/43 in/100 yds
Parallax correction	Correction de parallaxe	Correzione parallasse	Corrección de paralaje	100 m 109 yds	50∞ m 55∞ yds	50∞ m 55∞ yds	100 m 109 yds	50∞ m 55∞ yds	50∞ m 55∞ yds	100 m 109 yds	100 m 109 yds	100 m 109 yds
Approx. length	Longueur approx.	Lunghezza appross.	Longitud aprox.	334 mm/13.1 in	363 mm/14.29 in	371 mm/14.61 in	334 mm/13.1 in	363 mm/14.29 in	371 mm/14.61 in	308 mm/12.13 in	321 mm/12.64 in	350 mm/13.78 in
Approx. weight	Poids approx.	Peso appross.	Peso aprox.	460 g 16.2 oz	450 g 15.9 oz	495 g 17.5 oz	500 g 17.7 oz	490 g 17.4 oz	540 g 18.9 oz	340 g 12.0 oz	360 g 12.7 oz	410 g 14.5 oz
Functional temperature	Température de fonctionnement	Temperatura operativa	Temperatura de funcionamiento	-20/+55°C -4/+131°F	-20/+55°C -4/+131°F	-20/+55°C -4/+131°F	-20/+55°C -4/+131°F	-20/+55°C -4/+131°F	-20/+55°C -4/+131°F	-20/+55°C -4/+131°F	-20/+55°C -4/+131°F	-20/+55°C -4/+131°F
Storage temperature	Température de stockage	Temperatura di stoccaggio	Temperatura de almacenamiento	-30/+70°C -22/+158°F	-30/+70°C -22/+158°F	-30/+70°C -22/+158°F	-30/+70°C -22/+158°F	-30/+70°C -22/+158°F	-30/+70°C -22/+158°F	-30/+70°C -22/+158°F	-30/+70°C -22/+158°F	-30/+70°C -22/+158°F
Submersion tightness	Étanchéité	Impermeabilità sott'acqua	Estanqueidad	4 m 13 ft	4 m 13 ft	4 m 13 ft	4 m 13 ft	4 m 13 ft	4 m 13 ft	4 m 13 ft	4 m 13 ft	4 m 13 ft

Models with BRX/BRH: Parallax-free at 200 m/218 yds  
Modèles avec BRX/BRH: Parallaxe nulle à 200 m/218 yds  
Modelli con BRX/BRH: Parallaxe nulle à 200 m/218 yds  
Modelos con BRX/BRH: Libre de paralaje 200 m/218 yds

L: Light alloy  
Métal léger  
Lega leggera  
Aleación ligera

BT: Ballistic Tourlet  
Tourrelle de correction de parallaxe  
Torretta balistica  
Torreta balística

P: Parallax Tourlet  
Tourrelle de correction de parallaxe  
Torretta di parallasse  
Torre de paralaje

All the specifications given are typical values. We reserve the right to make changes regarding design and delivery. We accept no liability for printing errors.  
Toutes les caractéristiques indiquées sont des valeurs habituelles. Sous réserve de modifications ultérieures concernant la conception, la livraison et les erreurs d'impression.  
Tutti i valori specificati sono valori tipici. Ci riserviamo il diritto di apportare modifiche a livello di design e consegne e non accettiamo alcuna responsabilità per eventuali errori di stampa.  
Todos los datos están indicados en valores medios. Reservado el derecho a modificaciones en modelo y suministro, así como posibles errores de impresión.