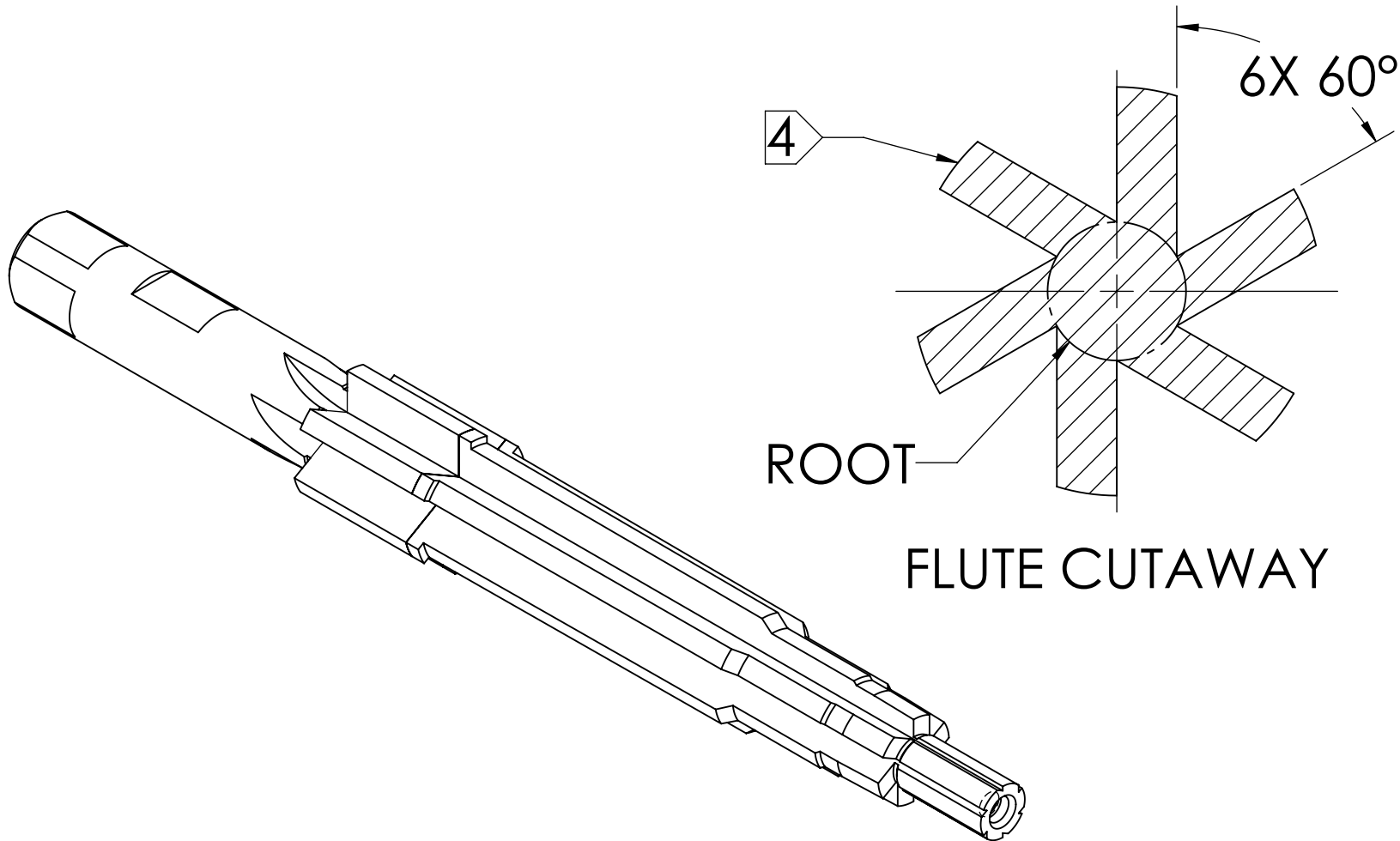
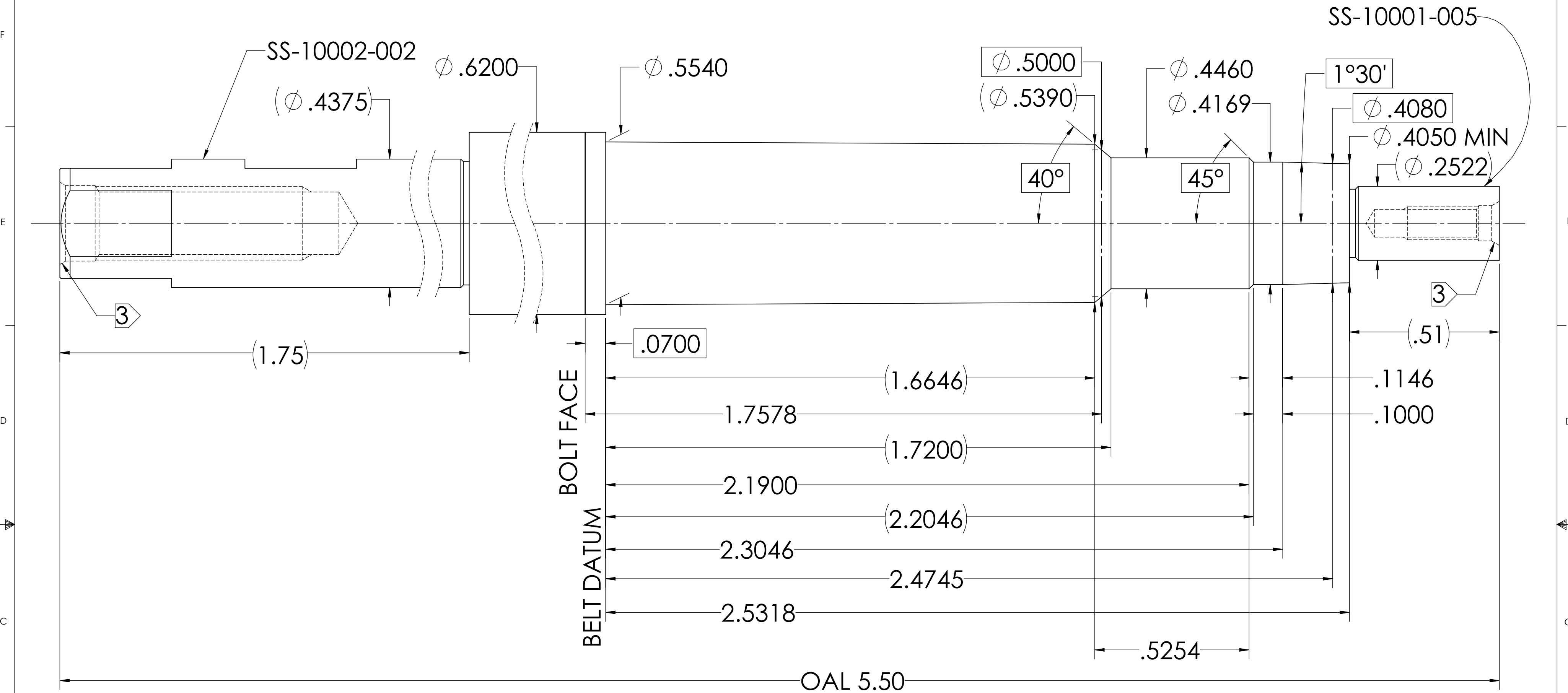


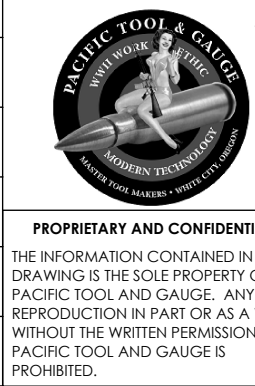
PTG-14356 416-348 ACKLEY IMPROVED CHAMBER REAMER



NOTES

- 1 MATERIAL = M2.
- 2 HEAT TREAT = Rc 58-62.
- 3 CENTER REQUIRED.
- 4 6 FLUTES, RIGHT HAND CUT.

BODY TPI	.00901
NECK TPI	.00000
THROAT TPI	.05237
PILOT SIZE	.2190
CALIBER	416
BORE SIZE	.4080
GROOVE SIZE	.4160
BASIC BRASS	
RESIZE N.D.	
MARGIN	.001/.003



UNLESS OTHERWISE SPECIFIED: DIMENSIONS ARE IN INCHES TOLERANCES: FRACTIONAL ± 1/16 ANGULAR: MACH ± 1/4 DEG TWO PLACE DECIMAL ± .010 THREE PLACE DECIMAL ± .005 FOUR PLACE DECIMAL ± .0005				NAME	DATE	PACIFIC TOOL AND GAUGE	
DRAWN		JLJ	07/26/23	CHECKED		TITLE:	
ENG APPR.				MFG APPR.		416-348 ACKLEY IMPROVED CHAMBER REAMER	
Q.A.				EO-11081		SIZE C	DWG. NO. PTG-14356
DO NOT SCALE DRAWING						SCALE: 4:1	WEIGHT:
						SHEET 1 OF 1	