



Verney-Carron





WELCOME TO THE WORLD OF VERNEY-CARRON

TABLE OF CONTENTS

SMOOTH BARREL GUNS

Manual repeating shotguns

- Véloce p. 2 and 3

Over and under shotguns - Sagittaire

- Aquilon p. 4
- Polynox p. 5
- Bécassier p. 6
- Grand Bécassier p. 7
- Ultra Léger p. 8
- Spécial Palombe p. 8
- La Billebaude p. 8
- «Duo Cases» and additional barrels p. 14

Over and under shotguns - SagittaireXS

- XS20 Plaine p. 12
- XS20 Bécassier p. 13
- «Duo Cases» and additional barrels p. 15

Entry-level shotguns

- Vercar p. 9

Semi-automatic shotguns

- Inertia operated - Matrix p. 10
- Gas operated
V-One / V12N / V20N / V28N p. 11

Single-barrel shotguns

- Solo p. 24

Pump action shotguns

- P12 p. 24

RIFLED BARREL GUNS

Over and under rifles - Sagittaire

- Express One p. 17
- Traqueur One p. 17
- Gros Gibier One p. 17
- «Duo Cases» and additional barrels p. 14

Over and under rifles - SagittaireXS

- SagittaireXS eXS p. 16
- «Duo Cases» and additional barrels p. 15

Manual repeating rifle

- Speedline p. 18 and 19

Linear reloading rifles

- Impact LA p. 20 and 21

Semi-automatic rifles

- Impact NT p. 22 and 23

OTHERS

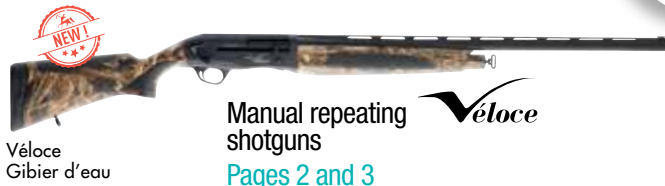
- Accessories and Optics - Optimum p. 25
- Pistol grip caps p. 25
- Hunting knives p. 28

AT A GLANCE, THE WHOLE RANGE



Verney-Carron

SMOOTH BARREL GUNS



Véloce
Gibier d'eau

Manual repeating
shotguns
Pages 2 and 3

Véloce



Sagittaire
Aquilon

Over & under
shotguns
Pages 4 to 8

Sagittaire



Juxtaposé Vercar
28 gauge

Entry-level
shotguns
Page 9

VERCAR



Matrix Plaine

Inertia operated
semi-automatic shotguns
Page 10

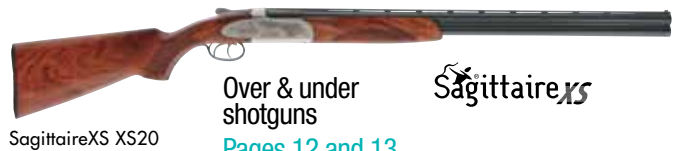
MATRIX



V-One

Gas operated
semi-automatic shotguns
Page 11

VI2N



SagittaireXS XS20

Over & under
shotguns
Pages 12 and 13

SagittaireXS



Solo 410

Single barrel
shotguns
Page 24

SOLO



P12 BlackCrow

Pump action
shotguns
Page 24

P12

RIFLED BARREL GUNS



SagittaireXS eXS

Over and under rifles
Page 16

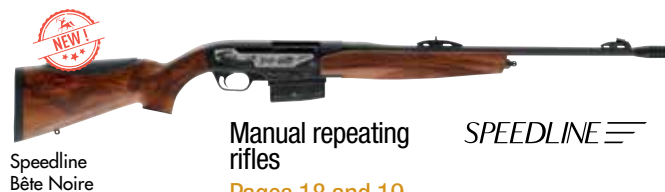
SagittaireXS



Sagittaire
Express One

Over and under rifles
Page 17

Sagittaire



Speedline
Bête Noire

Manual repeating
rifles
Pages 18 and 19

SPEEDLINE



Impact LA One
Left-Hander

Linear reloading rifles
Pages 20 and 21

IMPACT LA



Impact NT Classique
Left-Hander

Semi-automatic rifles
Pages 22 and 23

IMPACT NT



Master the speed, **optimize your instinct...**

Shoulder the Véloce, lastborn from the partnership of our R&D department and the NOVAM design laboratory from Saint-Etienne.

This new kind of manual repeating shotgun, developed in order to fulfill the wishes of the most demanding, will bring you into history. **It's up to you to work the lever...**



★★★ walnut stock

4 plates
to adjust drop

71 cm barrel, chrome molybdenum
«Super Diamond» steel

Efficient adjustable
recoil pad supplied
with two spacers

Magazine Tube:
5 + 1

Ergonomy has been designed
in order to fulfill the wishes
of the most demanding.

V checkering, ultra ergonomic, allowing
a very efficient grip of the hands
on the stock and the forend.



FIBER OPTIC FRONT SIGHT



System



The patented « Stop&Go® » system allows an unequalled rate of fire on a manual repeating shotgun by locking the bolt to the rear after automatic ejection of the fired shells. The reloading is achieved by a light pressure on the lever.



RECEIVER WITH RAIL ON THE TOP COMPATIBLE WITH MOST OF THE MOUNTS AVAILABLE ON THE MARKET



Super Magnum
(= 12/89)

+ YOU WILL LIKE

- Internal 7 cm long choke for an increase in maximum range
- Wetland finish: increased resistance to abrasion and moisture corrosion
- An unequalled rate of fire on a manual repeating shotgun thanks to the Stop&Go® system.



WEIGHT
around
3,450 kg



VÉLOCE GIBIER D'EAU 
Ref. VL12CX76



Rail with built-in battue rib

+ YOU WILL LIKE

Versatile aim thanks to a Cantilever rail::

- with built-in battue rib and fiber optic rear sight or
- allowing the mounting of an optical sight



LIGHTWEIGHT
around
3,150 kg

VÉLOCE GROS GIBIER
Ref. VL1256GG



LIGHTWEIGHT
around
3,150 kg



VÉLOCE CLASSIQUE
Ref. VL12CX71

**NEW
2018**

Models suitable for left-hander
(«Stop&Go» lever on the left side).
On request.

SPECIFICATIONS

- **CALIBER:** Magnum and Super Magnum (Gibier d'Eau) 12 gauge
- **TOTAL LENGTH:** 113 cm (Gros Gibier), 123 cm (Classique) and 128 cm (Gibier d'Eau)
- **WEIGHT:** 3,150 or 3,450 kg (Gibier d'Eau)
- **BARREL:** Chrome molybdenum « Super Diamond » steel:
 - 76 cm interchangeable chokes (Gibier d'Eau)
 - 61 cm fixed choke (cylindrical) (Gros Gibier)
 - 71 cm interchangeable chokes (Classique)
- **RECEIVER**
 - Rail on the top compatible with most of the mounts available on the market
 - In Ergal, high sturdiness, black anodized.
- **STOCK:**
 - Soft Touch camouflaged synthetic stock with ergonomic inserts (Gibier d'Eau)
 - Soft Touch synthetic stock (Gros Gibier)
 - 3-star walnut with ultra-ergonomic V-shaped checkering (Classique).
- **EJECTION:** automatic
- **SIGHTING SYSTEM:** 8mm ventilated rib and fiber optic front sight (Gibier d'Eau and Classique). Cantilever Rail (Gros Gibier)
- **MAGAZINE TUBE :** 5 + 1
- **SLING SWIVELS :** supplied and installed



Supplied with gun case and 5 interchangeable chokes, from cylindrical to Full choke. (Except Gros Gibier: fixed choke)

OPTIONS

- Magazine tube extender
- 5 cm barrel extender with interchangeables chokes



OVER AND
UNDER SHOTGUNS

Sagittaire AQUILON



★★★ walnut stock

NEW
ENGRAVINGS



«Duck» pistol grip cap
More caps see p. 25



STEEL SHOT



PROOF TESTED

SAGITTAIRE® AQUILON SAINT-HUBERT

Ref. 262CX71AQSH (extractor - Ergal receiver)
Ref. 262CX71MAQSH (extractor - steel receiver)
Ref. 272CX71AQSH (automatic ejectors - Ergal receiver)
Ref. 272CX71MAQSH (automatic ejectors - steel receiver)

★★★ walnut stock

NEW
ENGRAVINGS



STEEL SHOT



PROOF TESTED

SAGITTAIRE® AQUILON EXTRA-LUXE

Ref. 262CX71AQ (extractor - Ergal receiver)
Ref. 262CX71MAQ (extractor - steel receiver)
Ref. 272CX71AQ (automatic ejectors - Ergal receiver)
Ref. 272CX71MAQ (automatic ejectors - steel receiver)

★★ walnut stock

NEW
ENGRAVINGS



STEEL SHOT



PROOF TESTED

SAGITTAIRE® AQUILON CLASSIQUE

Ref. 242CX71AQ (extractor - Ergal receiver)
Ref. 242CX71MAQ (extractor - steel receiver)
Ref. 252CX71AQ (automatic ejectors - Ergal receiver)
Ref. 252CX71MAQ (automatic ejectors - steel receiver)

SPECIFICATIONS

- CALIBER: Magnum 12 gauge
- TOTAL LENGTH: 115 cm
- WEIGHT: 2,700 kg (Ergal receiver)
or 3 kg (steel receiver)
- BARRELS:
 - 71 cm, Chrome molybdenum cold-forged «Super Diamond» steel
 - Special slim interchangeable Chokes for the Aquilon
- TRIGGER CHOICES:
 - Classic double
 - Double with dual-action front trigger
 - Non-selective single trigger

- LOCKING: by 2 conical bolts
- RECEIVER: steel or forged Ergal
- WOOD: oil-finished walnut
 - Stock: pistol grip (or English stock at extra charge)
 - Forend: full
- EJECTION: extractor or automatic ejectors with extremely powerful hammers
- SIGHTING SYSTEM: 7 mm ventilated rib
- PERCUSSION: axial and direct
- SLING SWIVELS: supplied

Supplied with gun case
and 3 interchangeable chokes
1/4, 1/2 and full.



OPTIONS

- Custom stock measurements on request
- Modified stock for left-hander
- English stock available at extra charge
- Full cross-over stock (to aim with left eye while shouldering on the right)



- Interchangeable chokes from cylindrical to Extra choke special for Aquilon mode
- Additional set of barrels
- Custom possibilities:
 - your name on the barrel
 - your initials on the trigger guard



**OVER AND
UNDER SHOTGUNS**

Sagittaire Polynox



★★★ walnut stock



SAGITTAIRE POLYNOX® SAINT-HUBERT

Ref. 262CX68PSH (extractor - Ergal receiver)
Ref. 262CX68MP SH (extractor - steel receiver)
Ref. 272CX68PSH (automatic ejectors - Ergal receiver)
Ref. 272CX68MP SH (automatic ejectors - steel receiver)

★★★ walnut stock



SAGITTAIRE POLYNOX® EXTRA-LUXE

Ref. 262CX68P (extractor - Ergal receiver)
Ref. 262CX68MP (extractor - steel receiver)
Ref. 272CX68P (automatic ejectors - Ergal receiver)
Ref. 272CX68MP (automatic ejectors - steel receiver)

★★ walnut stock



SAGITTAIRE POLYNOX® CLASSIQUE

Ref. 242CX68P (extractor - Ergal receiver)
Ref. 242CX68MP (extractor - steel receiver)
Ref. 252CX68P (automatic ejectors - Ergal receiver)
Ref. 252CX68MP (automatic ejectors - steel receiver)



SAGITTAIRE POLYNOX® ONE

Only available with extractor and Ergal receiver.
Supplied with only 3 chokes. Mat barrel finish.

Ref. 242CXONE68P («classic» double triggers)
Ref. 241CXONE68P (single trigger)

SPECIFICATIONS

- CALIBER: Magnum 12 gauge
- TOTAL LENGTH: 112 cm (with internal chokes)
- WEIGHT: 2,700 kg (Ergal receiver) or 3 kg (steel receiver)
- BARRELS:
 - 68 cm, Chrome molybdenum cold-forged «super diamond» steel
 - Interchangeable Chokinox® chokes (internal, long et extra long) lengthening the barrels of 3 or 5 cm
- TRIGGER CHOICES:
 - Classic double
 - Double with dual-action front trigger
 - Non-selective single trigger

- LOCKING: by 2 conical bolts
- RECEIVER: Steel or forged Ergal
- WOOD: oil-finished walnut
 - Stock: pistol grip (or English at extra charge)
 - Forend: full
- EJECTION: extractor or automatic ejectors with extremely powerful hammers (except Polynox One)
- SIGHTING SYSTEM: 7mm ventilated rib
- PERCUSSION: axial and direct
- SLING SWIVELS: supplied

Supplied with gun case and 5 interchangeable chokes Chokinox® (3 x «internal»: ¼, ½, full and 2 x «Long»: ¼ and ½) (Except Polynox One)



OPTIONS

- Custom stock measurements on request
- Modified stock for left-hander
- English stock available at extra charge
- Full cross-over stock (to aim with left eye while shouldering on the right)
- Interchangeable Chokinox® chokes
 - Internal
 - Long (+3 cm)
 - Extra Long (+5 cm)
- Additional set of barrels
- Custom possibilities:
 - your name on the barrel
 - your initials on the trigger guard



OVER AND UNDER SHOTGUNS

Sagittaire BECASSIER



+ YOU WILL LIKE

WOODCOCK HUNTING : A DIFFICULT ART

An extremely short and lightweight shotgun, with weight balanced to the rear for fast shouldering, combined with Verney-Carron's special rifled barrel designed to open the shot pattern up, giving you an optimal spread for woodcock or close range shooting.

*** walnut stock

NEW ENGRAVINGS

«Woodcock» pistol grip cap (More caps see p. 25).

LIGHTWEIGHT **STEEL SHOT**
2,500 kg **PROOF TESTED**

SAGITTAIRE BÉCASSIER MORDOREE

Ref. 262RI60PSH (extractor - rifled lower barrel)
Ref. 272RI60PSH (automatic ejectors - rifled lower barrel)
Ref. 262CI60PSH (extractor - smooth lower barrel)
Ref. 272CI60PSH (automatic ejectors - smooth lower barrel)

*** walnut stock

NEW ENGRAVINGS

LIGHTWEIGHT **STEEL SHOT**
2,500 kg **PROOF TESTED**

SAGITTAIRE BECASSIER EXTRA-LUXE

Ref. 262RI60P (extractor - rifled lower barrel)
Ref. 272RI60P (automatic ejectors - rifled lower barrel)
Ref. 262CI60P (extractor - smooth lower barrel)
Ref. 272CI60P (automatic ejectors - smooth lower barrel)

★★ walnut stock

NEW ENGRAVINGS

LIGHTWEIGHT **STEEL SHOT**
2,500 kg **PROOF TESTED**

SAGITTAIRE BECASSIER CLASSIQUE

Ref. 242RI60P (extractor - rifled lower barrel)
Ref. 252RI60P (automatic ejectors - rifled lower barrel)
Ref. 242CI60P (extractor - smooth lower barrel)
Ref. 252CI60P (automatic ejectors - smooth lower barrel)

SPECIFICATIONS

- CALIBER: 12 gauge
- TOTAL LENGTH: 104 cm
- WEIGHT: 2,500 kg
- BARRELS:
 - 60 cm, Chrome molybdenum cold-forged «Super Diamond» steel
 - Lower barrel with Verney-Carron extra-spread rifling (or smooth) and upper barrel with interchangeable chokes Chokinox®

- **TRIGGER CHOICES:**
 - Classic double
 - Double with dual-action front trigger
 - Non-selective single trigger

- LOCKING: by 2 conical bolts
- RECEIVER: forged Ergal
- WOOD: OIL-FINISHED WALNUT
 - Stock : pistol grip or English
 - Forend : full
- EJECTION: extractor or automatic ejectors
- SIGHTING SYSTEM: 7mm ventilated rib
- PERCUSSION: axial and direct
- SLING SWIVELS: supplied



Supplied with gun case and 2 interchangeable chokes Chokinox® : cyl and 1/2

OPTIONS

- Custom stock measurements on request
- Modified stock for left-hander
- English stock available
- Full cross-over stock (to aim with left eye while shouldering on the right)



- Additional set of barrels (see p. 14)
- Custom possibilities:
 - your name on the barrel
 - your initials on the trigger guard



OVER AND UNDER SHOTGUNS Sagittaire GRAND BECASSIER



YOU WILL LIKE



Even lighter : 2,4 kg
Barrel without ventilated rib
Supplied with gun case
Incredibly effective!
Lower barrel with Verney-Carron extra-spread rifling

LIGHTWEIGHT
around
2,400 kg
STEEL SHOT
PROOF TESTED

SAGITTAIRE GRAND BECASSIER MORDOREE

Ref. 262RI60PGBSH



NEW ENGRAVINGS

*** walnut stock

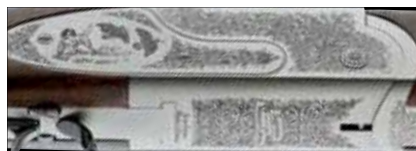
«Woodcock» pistol grip cap
More caps see p. 25



LIGHTWEIGHT
around
2,400 kg
STEEL SHOT
PROOF TESTED

SAGITTAIRE GRAND BECASSIER EXTRA-LUXE

Ref. 262RI60PGB



NEW ENGRAVINGS

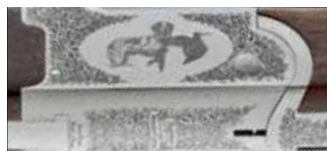
*** walnut stock



LIGHTWEIGHT
around
2,400 kg
STEEL SHOT
PROOF TESTED

SAGITTAIRE GRAND BECASSIER CLASSIQUE

Ref. 242RI60PGB



NEW ENGRAVINGS

** walnut stock

SPECIFICATIONS

- CALIBER: 12 gauge
- TOTAL LENGTH: 104 cm
- WEIGHT: 2,400 kg
- BARRELS:
 - 60 cm, Chrome molybdenum cold-forged «Super Diamond» steel
 - Lower barrel with Verney-Carron extra spread rifling and upper barrel with interchangeable chokes Chokinox® (cylinder lower barrel on request)

• TRIGGER CHOICES:

- Classic double
- Double with dual-action front trigger
- Non-selective single trigger

- LOCKING: by 2 conical bolts
- RECEIVER: forged Ergal
- WOOD: oil-finished walnut
 - Stock: pistol grip (or English at extra charge)
 - Forend: full
- EJECTION: extractor (or automatic ejectors on request and at extra charge)
- SIGHTING SYSTEM: simple front sight
- PERCUSSION: axial and direct
- SLING SWIVELS: supplied

Supplied with gun case and 2 interchangeable chokes Chokinox®: cylinder and ½



OPTIONS

- Custom stock measurements on request
- Modified stock for left-hander
- English stock available at extra charge
- Full cross-over stock (to aim with left eye while shouldering on the right)



- Additional set of barrels
- Custom possibilities:
 - your name on the barrel
 - your initials on the trigger guard



OVER AND UNDER SHOTGUNS

Sagittaire

ULTRA LÉGER, SPÉCIAL PALOMBE & LA BILLEBAUDE



YOU WILL LIKE

ULTRA LIGHT

An extremely refined 12 gauge shotgun with the exceptional Sagittaire over and under shotgun characteristics, the perfect choice for all hunters who walk long distances, thanks to its ultra-light weight, **less than 2.5 kg!**



LIGHTWEIGHT



around **2,480 kg**

STEEL SHOT



PROOF TESTED

SAGITTAIRE ULTRA LEGER EXTRA LUXE

Ref. 262CX66PUL

SAGITTAIRE ULTRA LEGER CLASSIQUE

Ref. 242CX66PUL

NEW ENGRAVINGS

★★★ walnut stock

YOU WILL LIKE

SPECIAL PALOMBE

11 mm ventilated steel milled rib



WEIGHT

around **3,250 kg**

SAGITTAIRE SPECIAL PALOMBE CLASSIQUE

Ref. 242TE76MP

★★ walnut stock

YOU WILL LIKE

LA BILLEBAUDE

Supplied with gun case and 6 interchangeable Chokinox® chokes.

Luminous rear sight



2 «Internal» chokes:
Cylinder and 1/2 choke

2 «Extra-Long» chokes:
Rifled and 1/2 choke

2 «+10 cm» chokes: 1/4 choke,
1/2 choke or 3/4 choke

LIGHTWEIGHT



around **2,500 kg**

STEEL SHOT



PROOF TESTED

SAGITTAIRE LA BILLEBAUDE CLASSIQUE

Ref. 242CX60P

★★ walnut stock

SPECIFICATIONS

- GAUGE: Magnum 12
- TOTAL LENGTH: 110 cm (Ultra Léger), 120 cm (Spécial Palombe), 104 cm (La Billebaude)
- WEIGHT: 2,480 kg (Ultra Léger), 3,250 kg (Spécial Palombe), 2,500 kg (La Billebaude)
- BARRELS:
 - Chrome molybdenum cold-hammered "Super Diamond" steel. Length : 66 cm (Ultra Léger), 76 cm (Spécial Palombe), 60 cm (La Billebaude)
 - Chokes : Interchangeable chokinox chokes 1/4, 1/2 and full (Ultra Léger), Fixed chokes 3/4 and extra choke (Spécial Palombe), 6 interchangeable Chokinox® chokes (La Billebaude)

- RECEIVER: forged Ergal (Ultra Léger and La Billebaude), steel (Spécial Palombe)

• TRIGGER CHOICES:

- Classic double
- Double with dual-action front trigger
- Non-selective single trigger

- LOCKING: by 2 conical bolts
- WOOD: oil-finished walnut
 - Stock: pistol (or English at extra charge)
 - Forend: full
- EJECTION: extractor (or automatic ejectors on request and at extra charge)
- SIGHTING SYSTEM: 7mm ventilated rib (Ultra Léger), 11mm ventilated milled rib (Spécial Palombe), 7mm ventilated rib with luminous rear sight (2 green points) and fiber optic front sight (La Billebaude)
- PERCUSSION: axial and direct
- SLING SWIVELS: supplied

OPTIONS

- Custom stock measurements on request
- Modified stock for left-hander
- English stock available at extra charge
- Full cross-over stock (to aim with left eye while shouldering on the right)
- Interchangeable Chokinox® chokes
 - Internal
 - Long (+3 cm)
 - Extra Long (+5 cm)
- Additional set of barrels
- Custom possibilities:
 - your name on the barrel
 - your initials on the trigger guard



YOU WILL LIKE

It is possible to shoot, shot by shot or two shots at once.



JUXTAPOSE VERCAR CANARDOUZE CAL.12 SUPER MAGNUM

This side-by-side shotgun will be the perfect companion for waterfowl hunting from blinds. It has 81cm barrels with interchangeable chokes (supplied with 4 chokes), steel receiver, Super Magnum 12 Ga (=12/89), weight about 5.500 kg, pistol stock, integrated anti-recoil system, extractor, steel shot proof tested.

Supplied with adaptor for waterfowl scope.

Supplied with a case and 4 interchangeable chokes: 2 x 1/2 and 2 x full.

Ref. CHJ12VERCAR81CX



JUXTAPOSE VERCAR®

Solid and reliable, this side by side Vercar has 71cm barrels with interchangeable chokes (supplied with 3 chokes), pistol grip stock, steel receiver, steel shot proof tested (except 28 gauge and 410 gauge), selective single trigger, extractor.

Ref. CHJ12VERCAR71CX (Magnum 12 gauge - around 2,750 kg)

Ref. CHJ20VERCAR71CX (Magnum 20 gauge - around 2,650 kg)

Ref. CHJ28VERCAR71CX (28 gauge - around 2,500 kg)

Ref. CHJ410VERCAR71CX (410 gauge - around 2,100 kg)



SUPERPOSE VERCAR®

This Vercar over and under shotgun has 71cm barrels with interchangeable chokes (supplied with 5 chokes), grey steel receiver, pistol grip stock, selective single trigger, extractor and steel shot proof tested (except 28 gauge and 410 gauge).

Ref. CHVERCAR71CX (Magnum 12 gauge - around 3,100 kg)

Ref. CH20VERCAR71CX (Magnum 20 gauge - around 2,800 kg)

Ref. CH28VERCAR71CX (28 gauge - around 2,600 kg)

Ref. CH410VERCAR71CX (410 gauge - around 2,600 kg)



SUPERPOSE VERCAR® GROS GIBIER 12

It has 55cm barrels with cylindrical fixed chokes, grey steel receiver, weight around 2,750 kg, Magnum 12 gauge, pistol stock, selective single trigger, extractor.

Ref. CHVERCAR55CC



SUPERPOSE VERCAR® TRAP 12

Grey steel receiver, automatic ejectors, 76cm barrels with interchangeable chokes (supplied with 5 chokes), Magnum 12 gauge, weight around 3,6 kg, high ventilated rib (10mm) with fiber optic front sight, single selective trigger, oil-finished Monte-Carlo pistol stock 370 mm length with adjustable comb, drop at comb 38 mm, drop at heel 55 mm, total length 121 cm for this Vercar Trap 12 over and under.

Ref. CHVERCAR76CXT



LIGHTWEIGHT
around
3,100 kg

STEEL SHOT
PROOF TESTED

MATRIX PLAINE Magnum 12 gauge

71 cm barrel, total length 125 cm, Magnum 12 gauge, Ergal receiver, ventilated rib 7 mm, interchangeable chokes (supplied with 3 chokes: cylinder, ½ and full) Steel shot proof tested.

Ref. **MATB12CX71** (Wooden stock)
Ref. **MATS12CX71** (Synthetic stock)



LIGHTWEIGHT
around
3,150 kg

STEEL SHOT
PROOF TESTED

MATRIX GIBIER D'EAU Magnum 12 gauge

76 cm barrel, total length 130 cm, Magnum 12 gauge, Ergal receiver, ventilated rib 7 mm, interchangeable chokes (supplied with 3 chokes: cylinder, ½ and full) Steel shot proof tested.

Ref. **MATB12CX76** (Wooden stock)
Ref. **MATS12CX76** (Synthetic stock)



LIGHTWEIGHT
around
3 kg

STEEL SHOT
PROOF TESTED

MATRIX BECASSIER Magnum 12 gauge

61 cm barrel, total length 114 cm, Magnum 12 gauge, Ergal receiver, ventilated rib 7 mm, interchangeable chokes (supplied with 3 chokes: cylinder, ½ and full) Steel shot proof tested.

Ref. **MATB12C60B** (Wooden stock)



LIGHTWEIGHT
around
3 kg

MATRIX GROS GIBIER 12 Magnum 12 gauge

61 cm barrel, total length 114 cm, Magnum 12 gauge, Ergal receiver, cylinder fixed choke, rear sight and front sight.

Ref. **MATB12C60S** (Wooden stock)

OPTIONS

- Interchangeable chokes
- extension + 10 cm



- Additional sets of barrels Gros Gibier 12, Plaine and Gibier d'eau (cannot be mounted on Matrix Becassier)

+ YOU WILL LIKE

- Inertia system
- Minimum maintenance for maximum performance
- Ergal receiver
- A well-designed shotgun, excellent handling, and serious workmanship at an attractive price!

GAZ OPERATED SEMI-AUTOMATIC SHOTGUNS

V-ONE V12N
V20N V28N



**YOU WILL
LIKE**

- Gas intake system in stainless steel and aluminium. Easy to maintain, the piston includes an all-metal sealing segment for greater reliability. Works with cartridges from 28g to 52g.

- High resistance Ergal receiver, milled for easy fitting of optics.
- Adjustable drop thanks to the 4 plates supplied with the gun
- Magazine cut-off



V12N PLAINE Magnum 12 gauge

71 cm barrel, total length 123 cm, supplied with 3 interchangeable chokes, ventilated rib 7 mm. Steel shot proof tested.

Ref. **V12NCX71** (Wooden stock)
Ref. **V12NCX71G** (Wooden stock - left-handed model)

LIGHTWEIGHT
around
3,150 kg

STEEL SHOT
PROOF TESTED

V12N GROS GIBIER 12 Magnum 12 gauge

61 cm barrel, total length 113 cm, cylinder fixed chokes, battue rib

Ref. **V12NSB61** (Wooden stock)

V12N GIBIER D'EAU Magnum 12 gauge

76 cm barrel, total length 128 cm, supplied with 3 interchangeable chokes, ventilated rib 7 mm. Steel shot proof tested.

Ref. **V12NCX76** (Wooden stock)

V12N SOUS-BOIS Magnum 12 gauge

66 cm barrel, total length 118 cm, supplied with 3 interchangeable chokes, ventilated rib 7 mm. Steel proof tested.

Ref. **V12NCX66** (Wooden stock)



V-ONE Magnum 12 gauge

71 cm Barrel, total length 123 cm, supplied with 3 interchangeables chokes. 7mm ventilated rib. Steel shot proof tested.

Ref. **V12NONECX71** (synthetic stock)

LIGHTWEIGHT
around
3,100 kg

STEEL SHOT
PROOF TESTED



*** walnut stock

V20N Magnum 20 gauge

71 cm barrel, total length 123 cm, supplied with 5 interchangeable chokes, ventilated rib 7mm, weight 2,650kg. Steel shot proof tested.

Ref. **V20NCX71** (Wooden stock ***)

LIGHTWEIGHT
around
2,650 kg

STEEL SHOT
PROOF TESTED



V28N 28 gauge

71 cm barrel, total length 123 cm, supplied with 5 interchangeable chokes, ventilated rib 6 mm, weight 2,600 kg.

Ref. **V28NCX71** (Wooden stock)

LIGHTWEIGHT
around
2,600 kg

STEEL SHOT
PROOF TESTED



OVER AND UNDER SHOTGUNS

Sagittaire^{XS} XS20 PLAINE



+ YOU WILL LIKE



True 20 gauge with a slim round receiver (XS= Xtra Small)

+ YOU WILL LIKE



The receiver is enjoying a traditional design and a re-designed slimer top lever.

★★★ walnut stock



LIGHTWEIGHT
around
2,600 kg

STEEL SHOT
PROOF TESTED

SAGITTAIREXS XS20 PLAINE EXTRA-LUXE

Ref. 262XS20CX71 (extractor)
Ref. 272XS20CX71 (automatic ejectors)



★★ walnut stock



LIGHTWEIGHT
around
2,600 kg

STEEL SHOT
PROOF TESTED

SAGITTAIREXS XS20 PLAINE CLASSIQUE

Ref. 242XS20CX71 (extractor)
Ref. 252XS20CX71 (automatic ejectors)



SPECIFICATIONS

- CALIBER: Magnum 20 gauge
- TOTAL LENGTH: 115 cm
- WEIGHT: 2,600 kg
- BARRELS:
 - 71 cm Chrome molybdenum cold-forged « super diamond » steel
 - Interchangeable chokes, 20 gauge

• TRIGGER CHOICES:

- Classic double
- Double with dual-action front trigger
- Non-selective single trigger

- LOCKING: by 2 conical bolts
- RECEIVER: Ergal (steel on request)
- WOOD: oil-finished walnut
 - Stock : pistol grip or English
 - Forend : full
- EJECTION: extractor or automatic ejectors
- SIGHTING SYSTEM: 7mm ventilated rib
- PERCUSSION: axial and direct



Supplied with gun case and 3 interchangeable chokes 1/4, 1/2 and full

OPTIONS

- XS20 Plaine Magnum 20 gauge with 66 cm barrels and 28 gauge with 71 cm barrels models are available on request
- English stock available at extra charge
- Custom stock measurements on request
- True left-hander
 - Left opening key
 - Modified stock for left-hander
- Interchangeable 20 gauge choke
- « Série spéciale » wood ★★★★★ and handmade engraving on request
- Additional set of barrels (see p.15)
- Custom possibilities:
 - your name on the barrel
 - your initials on the trigger guard



**OVER AND
UNDER SHOTGUNS**

Sagittaire^{XS} XS20 BECASSIER



★★★ walnut stock

LIGHTWEIGHT
around
2,370 kg

STEEL SHOT
PROOF TESTED

SAGITTAIREXS XS20 BECASSIER EXTRA-LUXE

Ref. 262XS20RI60



★★ walnut stock

LIGHTWEIGHT
around
2,370 kg

STEEL SHOT
PROOF TESTED

SAGITTAIREXS XS20 BECASSIER CLASSIQUE

Ref. 242XS20RI60



SPECIFICATIONS

- CALIBER: Magnum 20 gauge
- TOTAL LENGTH: 104 cm
- WEIGHT: 2,370 kg
- BARRELS:
 - 60 cm Chrome molybdenum cold-forged « super diamond » steel
 - Lower barrel with Verney-Carron extra spread rifling and upper barrel with interchangeable chokes
- **TRIGGER CHOICES:**
 - Classic double
 - Double with dual-action front trigger
 - Non-selective single trigger

- LOCKING: by 2 conical bolts
- RECEIVER: Ergal
- WOOD: oil-finished walnut
 - Stock : pistol grip or English
 - Forend : full
- EJECTION: extractor or automatic ejectors (on request)
- SIGHTING SYSTEM: 7mm ventilated rib
- PERCUSSION: axial and direct



Supplied with gun case
and 2 interchangeable chokes cylinder and ½

OPTIONS

- English stock available
- Custom stock measurements on request
- True left-hander
 - Left opening key
 - Modified stock for left-hander
- Interchangeable 20 gauge choke
- « Série spéciale » wood ★★★★★ and handmade engraving on request
- Additional set of barrels (see p.15)
- Custom possibilities:
 - your name on the barrel
 - your initials on the trigger guard

Combo 1 Sagittaire Polynox / Bécassier



Ref. COM68CX60RI

Special
Offers

SPECIFICATIONS

Sagittaire Polynox shotgun:

See page 5

Supplied with a complimentary case

Bécassier Barrels set:

- 60 cm barrels
- Supplied with 2 chokes

OPTIONS

- See page 5
- Other barrels (see below)

Combo 2 Sagittaire Express One / Polynox



Ref. COMBEXONE68CX

SPECIFICATIONS

Sagittaire Express One rifle:

See page 17

Additional forend for 12 Ga

Supplied with a complimentary case

Polynox Barrels set:

- 68 cm barrels
- Supplied with 5 chokes

OPTIONS

- Custom stock measurements on request
- Stock modified for left-handed
- Other barrels (see below)

Additional barrels Sagittaire

SOME SIMPLE RULES TO TAKE INTO ACCOUNT:

- There is no extra cost when an additional barrel is ordered at the same time as the weapon. If a barrel is ordered later, the gun has to be sent back to our workshop for adjustment and mandatory proof testing. Then an extra charge and 2 weeks in our workshop will have to be applied.
- When the gauge/caliber changes it is necessary to buy an additional forend.
- Barrels with extractor could be mounted on a gun with ejectors. The reverse is impossible.
- All smooth bore barrels are chrome plated and made from chrome molybdenum cold-hammered «Super Diamond» steel.

| MODEL | LENGTH | RIB | GAUGE | CHOKES | EXTRACTOR | EJECTORS | STEEL SHOT PROOF TESTED | |
|-----------------|--------|-------------|-----------|--|-----------|----------|-------------------------|-----------|
| Aquilon | 71 cm | yes - 7 mm | 12 Magnum | Supplied with 3 interchangeable Chokes | yes | yes | yes | see p. 4 |
| Polynox® | 68 cm | yes - 7 mm | 12 Magnum | Supplied with 5 Chokinox® | yes | yes | yes | see p. 5 |
| Bécassier | 60 cm | yes - 7 mm | 12 | Extra spread rifling and 2 Chokinox® | yes | yes | yes | see p. 6 |
| Bécassier | 60 cm | yes - 7 mm | 12 | Cylindrical and 2 Chokinox® | yes | yes | yes | see p. 6 |
| Grand Bécassier | 60 cm | no | 12 | Extra spread rifling and 2 Chokinox® | yes | yes | yes | see p. 7 |
| Ultra-Léger | 66 cm | no | 12 Magnum | Supplied with 3 Chokinox® | yes | yes | yes | see p. 8 |
| Spécial Palombe | 76 cm | yes - 11 mm | 12 Magnum | 3/4 and Extra-full | yes | no | no | see p. 8 |
| La Billebaude | 60 cm | yes - 7 mm | 12 Magnum | Supplied with 6 Chokinox® | yes | no | oui | see p. 8 |
| Gros Gibier One | 56 cm | battue | 12 Magnum | Cylindrical | yes | no | on request | see p. 17 |

Combo 1

SagittaireXS, XS20 Plaine,
XS20 Bécassier



Ref. COMBXS20

Special
Offers

SPECIFICATIONS

- Shotgun SagittaireXS20 Plaine :
See page 12
Supplied with a complimentary case
XS20 Bécassier Barrels set:
- 60 cm barrels
 - Supplied with 2 chokes

OPTIONS

- See page 12
- Other barrels (see below)

Combo 2

SagittaireXS, eXS Finition Classique
XS20 Plaine



Ref. COMBEXXS20

SPECIFICATIONS

- SagittaireXS eXS rifle
Additional forend
Supplied with a complimentary case
SagittaireXS XS20 Plaine Barrels set:
- 71 cm barrels
 - Supplied with 3 interchangeable Chokes

OPTIONS

- See page 16
- Other barrels (see below)

Additional barrels Sagittaire[®]XS

SOME SIMPLE RULES TO TAKE INTO ACCOUNT:

- There is no extra cost when an additional barrel is ordered at the same time as the weapon. If a barrel is ordered later, the gun has to be sent back to our workshop for adjustment and mandatory proof testing. Then an extra charge and 2 weeks in our workshop will have to be applied.
- When the gauge/caliber changes it is necessary to buy an additional forend.
- Barrels with extractor could be mounted on a gun with ejectors. The reverse is impossible.
- All smooth bore barrels are chrome plated and made from chrome molybdenum cold-hammered «Super Diamond» steel.

| MODEL | LENGTH. | RIB | GAUGE | CHOKES | EXTRACTOR | EJECTORS | STEEL SHOT PROOF TESTED | |
|----------------|---------|------------|-----------|---|-----------|----------|-------------------------|------------|
| XS20 Bécassier | 60 cm | yes - 7 mm | 20 Magnum | Extra spread rifling and 2 interchangeable Chokes | yes | yes | yes | see p. 13 |
| XS20 Plaine | 71 cm | yes - 7 mm | 20 Magnum | Supplied with 3 interchangeable Chokes | yes | yes | yes | see p. 12 |
| XS20 Sous-Bois | 66 cm | yes - 7 mm | 20 Magnum | Supplied with 3 interchangeable Chokes | yes | yes | yes | on request |
| XS28 | 71 cm | yes - 7 mm | 28 | Supplied with 3 interchangeable Chokes | yes | no | no | on request |



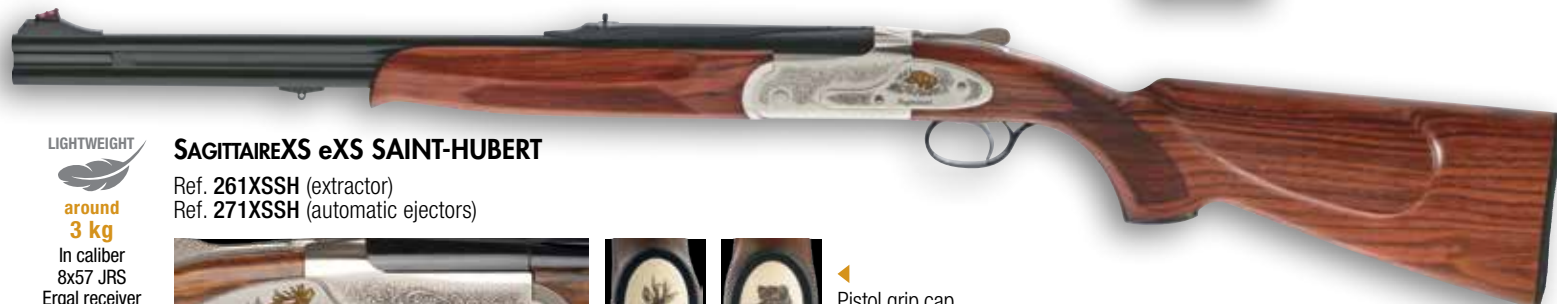
**YOU WILL
LIKE**



**THE SAGITTAIREXS eXS
HAS A GENUINE 20 GAUGE RECEIVER.**
(XS = Extra Small), with entirely reworked
lines (finer and rounded receiver, modified top
lever...).



ALL OUR RIFLES
SAGITTAIREXS eXS COME
WITH A CONTROL TARGET



LIGHTWEIGHT



**around
3 kg**

In caliber
8x57 JRS
Ergal receiver

SAGITTAIREXS eXS SAINT-HUBERT

Ref. 261XSSH (extractor)
Ref. 271XSSH (automatic ejectors)



▶ Pistol grip cap
More caps
see p.25



LIGHTWEIGHT



**around
3 kg**

In caliber
8x57 JRS
Ergal receiver

SAGITTAIREXS eXS EXTRA-LUXE

Ref. 261XS (extractor)
Ref. 271XS (automatic ejectors)



LIGHTWEIGHT



**around
3 kg**

In caliber
8x57 JRS
Ergal receiver

SAGITTAIREXS eXS CLASSIQUE

Ref. 241XS (extractor)
Ref. 251XS (automatic ejectors)



SPECIFICATIONS

- CALIBERS: 8x57 JRS, 9,3x74R (or 30R Blaser on request)
- TOTAL LENGTH: 100 cm
- WEIGHT: 3 kg (Ergal receiver) or 3,2 kg (steel receiver)
- BARRELS: high precision rifled:
 - 56 cm
 - Intermediary welded rib
 - Micrometric adjustment at barrel ends
- TRIGGERS: non selective single trigger or «classic» double trigger on request
- LOCKING: by 2 conical bolts
- WOOD: oil-finished walnut
 - Stock: pistol grip with cheek piece. For left hander (without cheek piece) in option.
 - Forend: full tulip forend

- RECEIVER: size "20 gauge" in high resistance forged steel (or forged Ergal in 8x57 JRS)
- EJECTION: extractor or automatic ejectors with extremely powerful hammers
- SIGHTING SYSTEM: battue rib with 3-point rear sight, fiber optic front sight
- OPTICS: machined slots for mounting
- PERCUSSION: axial and direct
- SLING SWIVELS: supplied



Supplied with gun case

OPTIONS

- Special offer **optimum**[®]
Pack rail + optic (see page 25)
- Custom stock measurements on request
- True left-hander:
 - Left-opening top lever
 - Stock modified for left-hander (without cheek piece)
- Pistol grip stock and rear safety
- Optics and mountings
- Additional set of barrels
- Custom possibilities:
 - your name on the barrel
 - your initials on the trigger guard



OVER AND UNDER RIFLES Sagittaire



**YOU WILL
LIKE**

Sagittaire's proven technology of over-and-under weapon, at reasonable price but made in France and designed for big game hunters.



ALL OUR EXPRESS ONE
AND TRAQUEUR ONE RIFLES
COME WITH A CONTROL TARGET



LIGHTWEIGHT

around
3,150 kg

SAGITTAIRE® EXPRESS ONE

Over and under rifle
56 cm barrels.
Total length 100 cm
Ref. 241EXONE



LIGHTWEIGHT

around
3 kg

SAGITTAIRE® TRAQUEUR ONE

Over and under rifle
50 cm barrels.
Total length 94 cm.
Ref. 241EXTONE

Anti-recoil pad for
more comfortable
shooting



LIGHTWEIGHT

around
2,600 kg

SAGITTAIRE GROS GIBIER ONE

«Slug» over and under shotgun
Gauge 12 Magnum.
Ref. 242ONE56CC

COMMON SPECIFICATIONS

- LOCKING: by 2 conical bolts on the upper barrel
- WOOD: oil-finished walnut
 - Stock: pistol
 - Forend: cased
- RECEIVER: forged Ergal, black anodized
- EJECTION: extractor
- SIGHTING SYSTEM: battue rib and fiber optic front sight
- PERCUSSION: axial and direct
- SLING SWIVELS: supplied

EXPRESS ONE AND TRAQUEUR ONE SPECIFICATIONS

- CALIBERS: 8x57 JRS, 9,3x74R
- TOTAL LENGTH: 100 cm or 94 cm (Traqueur One)
- WEIGHT: 3,150 kg or 3 kg (Traqueur One)
- BARRELS: High precision, rifled 56 cm or 50 cm (Traqueur One)
- INTERMEDIARY: welded rib
- TRIGGER: non-selective single trigger
- OPTICS: machined slots for mounting
- SIGHTING SYSTEM: battue rib with 3-point rear sight, fiber optic front sight

GROS GIBIER ONE SPECIFICATIONS

- GAUGE: 12 Magnum
- TOTAL LENGTH: 100 cm
- WEIGHT: 2,600 kg
- BARRELS: 56 cm
- CHOKES: Fixed - cylindrical
- TRIGGER: double with first dual action trigger (or single trigger on request)
- SIGHTING SYSTEM: battue rib and fiber optic front sight

OPTIONS

- Special offer **Optimum®**
Pack rail + optic
(see page 25)
- Custom stock measurements on request
- Stock modified for left-hander (without cheek piece)
- Additional set of barrels (see p. 25)
- Possibility of customization:
 - your name on the barrel
 - your initials on the trigger guard



MANUAL REPEATING RIFLES STOP&GO®

SPEEDLINE

**YOU WILL
LIKE**

- An exceptional modularity with the various accessories included
- An unequalled rate of fire on a manual repeating rifle thanks to the Stop&Go® system.



SPEEDLINE BÊTE NOIRE

Ref. 83SLBN



SPEEDLINE LEFT-HANDER BÊTE NOIRE

True left-hander version: calibers 30-06 and 300 Win Mag only

Ref. 83SLVGBN

System

The patented Stop&Go® system allows an unequalled rate of fire on a manual loading rifle, by locking the bolt to the rear after automatic ejection of the fired shells. The reloading is achieved by a light pressure on the lever.



- Ejection window on the left
- Lever on the left
- Left-hander stock

SPECIFICATIONS

- CALIBERS: 7x64, 300 Win Mag, 30-06, 7mm Rem Mag
- TOTAL LENGTH: 113 cm
- WEIGHT: 3,150 kg (without muzzle break)
- BARREL: high-precision barrel, rifled and fluted, 55 cm (without muzzle break)
- LOCKING: 6 lugs directly into the barrel
- STOCK: walnut, ergonomic checkering and Executive® Stock system.
- RECEIVER: Ergal
- EJECTION: 2 piston ejection system
- SIGHTING SYSTEM: versatile, with either open sights or battue rib

- MAGAZINE: removable metal magazine for 5 cartridges
- SLING SWIVELS: detachable, supplied
- OPTICS: threaded mounting holes in the receiver with steel insert

These rifles are tested and zeroed using the ammunition indicated on the magazine.



Supplied with gun case

OPTIONS

- Special offer  **Optimum®**
Pack rail + optic (see page 25)

- Optics, rails and mounts (see page 25)
- Additional 3 shots magazines
Additional 5 shots magazines
- Custom possibilities:
 - your name or your text on the barrel
 - personalized grip cap
 - Other pistol grip caps see page 25



LIGHTWEIGHT

AROUND
3,150 kg
(WITHOUT
MUZZLE BREAK)

SPEEDLINE GATOR

Limited edition

RHP : high performance coating « Alligator »
deep engraving of a striking reality aspect!

Ref. 85SL



RHP:
HIGH PERFORMANCE
COATING

1

Pistol grip cap
« Gator »



2

Stock in ★★★
walnut



3

« Alligator » deep engraving
of a striking reality aspect!



TRUE
LEFT-HANDER

LIGHTWEIGHT

around
3,150 kg
(WITHOUT-
MUZZLE BREAK)

SPEEDLINE LEFT-HANDER CLASSIQUE

True left-hander version: calibers 30-06 and 300 Win Mag only

Ref. 83SLVG



LIGHTWEIGHT

around
3,150 kg
(WITHOUT-
MUZZLE BREAK)

SPEEDLINE CLASSIQUE

Ref. 83SL

All Speedlines and all calibers are available in «left-hander adapted» version, (right-hander version with lever on the left side).



LINEAR RELOADING RIFLES

IMPACT® LA

**YOU WILL
LIKE**

The quickest linear rifles
on the market



Fluted and
threaded
barrel



**RHP: HIGH PERFORMANCE
COATING**

LIGHTWEIGHT
around
3,150 kg

IMPACT LA FUSION

Walnut stock and forend, supplied with gun case

Ref. **33FU** (55 cm barrel)
(7x64, 300 Win Mag, 30-06,
7mm Rem Mag calibres only)
Supplied with removable battue rib



LIGHTWEIGHT
around
3,100 kg

IMPACT LA CAMO

Synthetic stock and forend

Ref. **33LASCAMO** (55 cm barrel)
Ref. **33LATSCAMO** (47 cm barrel - Traqueur)



**TRUE
LEFT-HANDER**

- Ejection window on the left
- Left-hander stock

LIGHTWEIGHT
around
3,150 kg

IMPACT LA ONE LEFT-HANDER

Synthetic stock and forend.

True left-hander version: calibers 30-06 and 300 Win Mag only

Ref. **33LASG**

Available also for right-hander:

Ref. **33LAS** (55 cm barrel)
Ref. **33LATS** (47 cm barrel - Traqueur)



SPECIFICATIONS

- CALIBERS: 7x64, 300 Win Mag, 9,3x62 (3-shot magazine only), 30-06, 7mm Rem Mag and 308 Win, (243 Win on request).
- TOTAL LENGTH: 107 cm (or Traqueur 102 cm)
- WEIGHT: 3,150 kg (except synthetic stock: 3,100 kg and thumbhole stock: 3,250 kg)
- BARREL: high precision rifled, 52cm battue (or 47cm Traqueur)
- LOCKING: 6 lugs directly into the barrel
- STOCK: synthetic or walnut
- FOREND: fixed with sliding element

- RECEIVER: Ergal
- EJECTION: 2 piston ejection system
- SIGHTING SYSTEM: battue rib with adjustable rear sight, adjustable fiber optic front sight
- MAGAZINE: removable metal magazine for 3 or 5 cartridges (except 9,3 x 62)
- SLING SWIVELS: detachable, supplied
- OPTICS: threaded mounting holes in the receiver with steel insert

These rifles are tested and zeroed using the ammunitions indicated on their magazine.

OPTIONS

- Special offer **ptimum®**
Pack rail + optic (see page 25)

- Optics, rails and mounts (see page 25)
- Additional 3-shot magazine
- Additional 5-shot magazine
- Affût model (barrel 60cm) on request
- Custom possibilities:
your name on the barrel
- Fulgur muzzle break for Fusion model
- Performance Pack: 55 cm fluted barrel with thread and muzzle break in 7x64, 300 Win Mag, 30-06 and 7mm Rem Mag calibres only.



around
3,150 kg

IMPACT LA BÊTE NOIRE

Walnut stock and forend.

Ref. **33BN** (55 cm barrel)

Ref. **33BNT** (47 cm barrel - Traqueur)



around
3,150 kg

IMPACT LA LUXE BOIS

Walnut stock and forend.

Ref. **33LB** (55 cm barrel)

Ref. **33LBT** (47 cm barrel - Traqueur)



around
3,150 kg

IMPACT LA CLASSIQUE LEFT-HANDER

Walnut stock and forend.

True left-hander version: calibers 30-06 and 300 Win Mag only

Ref. **33LAG**

Available also for right-hander:

Ref. **33LA** (55 cm barrel)

Ref. **33LAT** (47 cm barrel - Traqueur)



around
3,250 kg

IMPACT LA CLASSIQUE TROU DE POUCE

Walnut stock and forend.

Ref. **33LATP** (55 cm barrel)

Ref. **33LATTP** (47 cm barrel - Traqueur)

Also available

IMPACT LA TROU DE POUCE CAMO

Walnut stock and synthetic forend

Ref. **33LASTPCAMO** (55 cm barrel)

Ref. **33LATSTPCAMO** (47 cm barrel - Traqueur)



SEMI-AUTO RIFLES

IMPACT[®] NT

**YOU WILL
LIKE**

THE SYSTÈME TECHNIQUE ANTI-REBOND

(Technical Anti-Kickback System) by Verney-Carron, which locks the bolt firmly in place on closure. This feature allows systematic and solid locking without risk of kickback. All Impact NT semi-auto rifles are equipped with this system.



Fluted and
threaded
barrel



**RHP: HIGH PERFORMANCE
COATING**

LIGHTWEIGHT



around
3,150 kg

IMPACT NT FUSION

Walnut stock and forend, supplied with gun case.

Ref. **43FU** (55 cm barrel)
(Calibers 7x64, 300 Win Mag,
7mm Rem Mag and 30-06 only)



LIGHTWEIGHT



around
3,100 kg

IMPACT NT CAMO

Synthetic stock and forend

Ref. **43BASCAMO** (55 cm barrel)
Ref. **43TSCAMO** (47 cm barrel - Traqueur)



LIGHTWEIGHT



around
3,250 kg

IMPACT NT TROU DE POUCE CAMO

Synthetic stock and forend

Ref. **43BASTPCAMO** (55 cm barrel)
Ref. **43TSTPCAMO** (47 cm barrel - Traqueur)

Also available :

IMPACT NT CLASSIQUE TROU DE POUCE

Walnut stock and forend

Ref. **43BATP** (55 cm barrel)
Ref. **43TTP** (47 cm barrel - Traqueur)

SPECIFICATIONS

- CALIBERS: 7x64, 300 Win Mag, 7 mm Rem Mag, 30-06,
- TOTAL LENGTH: 107 cm (or Traqueur 102 cm)
- WEIGHT: 3,150 kg (except synthetic stock: 3,100 kg and thumbhole stock: 3,250 kg)
- BARREL: high precision rifled 52 cm, floating (or Traqueur 47cm on request)
- TRIGGER: light with short travel
- LOCKING: 6 lugs directly into the barrel
- STOCK: synthetic or walnut
- RECEIVER: ERGAL

- EJECTION: 2 piston ejection system
- SIGHTING SYSTEM: battue rib with adjustable rear sight, adjustable fiber optic front sight
- MAGAZINE: pivoting metal magazine for 2 cartridges (or removable 2 or 5 cartridges).
- SLING SWIVELS: detachable, supplied
- OPTICS: threaded mounting holes in the receiver with steel insert

These rifles are tested and zeroed using the ammunitions indicated on their magazine.

OPTIONS

- Special offer **ptimum[®]**
Pack rail + optic (see page 25)

- Optics and mountings (see page 25)
- Affût model (barrel 60cm) on request
- Custom possibilities:
your name on the barrel
- Fulgur muzzle break for Fusion model
- Performance Pack: 55 cm fluted barrel with thread and muzzle break in 7x64, 300 Win Mag, 30-06 and 7mm Rem Mag calibers only.



LIGHTWEIGHT

around
3,150 kg

IMPACT NT BÊTE NOIRE

Walnut stock and forend

Ref. 43BN (55 cm barrel)

Ref. 43BNT (47 cm barrel)



LIGHTWEIGHT

around
3,150 kg

IMPACT NT DIAMANT NOIRE

3 stars oiled-finished walnut stock and forend
(Model presented).

Ref. 45LBAONE (55 cm barrel)

Selected walnut stock and forend.

Ref. 45BAONE (55 cm barrel)



**TRUE
LEFT-HANDER**

LIGHTWEIGHT

around
3,250 kg

IMPACT NT CLASSIQUE LEFT-HANDER

Walnut stock and forend.

True left-hander version: calibers 30-06 and 300 Win Mag only

Ref. 43BAGONE

Available also for right-hander:

Ref. 43BAONE (55 cm barrel)

Ref. 43TONE (47 cm barrel) - Traqueur



**TRUE
LEFT-HANDER**

LIGHTWEIGHT

around
3,150 kg

IMPACT NT ONE LEFT-HANDER

Synthetic stock and forend.

True left-hander version: calibers 30-06 and 300 Win Mag only

Ref. 43BASGONE

Available also for right-hander:

Ref. 43BASONE (55 cm barrel)

Ref. 43TSONE (47 cm barrel) - Traqueur



SINGLE-BARREL SHOTGUNS **SOLO** BY VERNEY-CARRON

+ YOU WILL LIKE

Extremely safe thanks to the external hammer and large safety catch.

SOLO, never hunt alone !



SOLO 410

Breach loading single barrel shotgun, 410 gauge, **71 cm barrel**, total length 110 cm, cocking by external hammers, steel receiver, synthetic stock and forend, with ejectors, black anti-glare finishing.

Weight : 2,5 kg

Ref. **SOLOC410**



SOLO 410SI

Breach loading single barrel shotgun with sound moderator, 410 gauge, **80 cm barrel**, total length 119 cm, cocking by external hammers, steel receiver, synthetic stock and forend, with ejectors, black anti-glare finishing.

Weight : 2,5 kg.

Ref. **SOLOC410SI**

PUMP ACTION SHOTGUNS

P12

+ YOU WILL LIKE



With the **RND®**, a non-scatter rifling, your shots will stay clustered and used in conjunction with the appropriate choke, shots will be similar to a smoothbore shotgun.

The action is produced according to Verney-Carron requirements and specifications. The barrel is made in our workshop in Saint-Etienne - FRANCE.



PUMP ACTION SHOTGUN P12 BLACKCROW

RND® (non-scatter rifling) system - Magnum 12 Ga - **71 cm or 76 cm barrel** with interchangeable chokes
Supplied with 3 interchangeable chokes - Capacity 4+1

Ref. **P12RCX71** or **P12RCX76**



PUMP ACTION SHOTGUN P12 GROS GIBIER

Hastings® Paradox® rifling - Magnum 12 Ga - **56 cm barrel** - Capacity 4+1

Ref. **P12RS56**

OPTIONS

- Interchangeable chokes
- Additional barrels:
 - Blackcrow, RND system, 71 cm or 76 cm
 - Gros Gibier, Hastings® Paradox® rifling
- Magazine tube extension (+2)

+ YOU WILL LIKE



The **Hastings® Paradox®** rifling has been developed by Verney-Carron R&D. It provides optimum gyroscopic effect to slug shells.

The action is produced according to Verney-Carron requirements and specifications. The barrel is made in our workshop in Saint-Etienne - FRANCE.

OPTIMUM® PIVOTING MOUNTS

| | For rifles LA, NT and Speedline | | | | For over and under rifles (Express) | | | |
|------------|---------------------------------|---------|--------|---------|-------------------------------------|---------|--------|---------|
| Diameters | ø 26 | | ø 30 | | ø 26 | | ø 30 | |
| Models | EAW | OPTAMIT | EAW | OPTAMIT | EAW | OPTAMIT | EAW | OPTAMIT |
| References | OMPC03 | OMPC06 | OMPC04 | OMPC05 | OMPE03 | OMPE06 | OMPE04 | OMPE05 |



Rail Weaver Ergal **Optimum®**
 ref. **ORWEL01** - For Impact NT, Impact LA and Speedline
 ref. **ORWEE02** - For Express/Sagittaire
 ref. **ORWXS02** - For Express/SagittaireXS eXS

OPTIMUM® RED DOT SIGHT



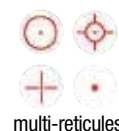
OPTIMUM red dot sight with projected reticle the most compact of the range.
 Unlimited field of vision for ultra fast aiming. Red dot sight 3 MOA with automatic adjustment of brightness according to the environment. Direct mount on rail Weaver.
 Magnification: 1x.
 Dimensions: 45x22x16mm.
 Weight: 90g
 Ref. **OPPCD19**



OPTIMUM red dot sight with tubular projected reticle, perfect for battue hunting.
 Red dot sight 3 MOA with 7 brightness levels to be used in every case.
 Aluminium mono block body for greater resistance.
 Direct mount on rail Weaver.
 Supplied with lens caps for protection.
 Magnification: 1x.
 Dimensions: 62x46x43mm.
 Weight: 120 g
 Ref. **OPPCD13**



The OPTIMUM red dot sight Grand Ecran with projected reticle offers you all advantages of the red dot optimum sight: lightness, compactness and wide field of vision.
 Magnification: 1x
 Objective width: 33mm.
 Field of view at 100m: 15.7 m
 Length: 8.2 cm
 weight: 112 g.
 Ref. **OPRGE01**



multi-reticules

CHOOSE YOUR PISTOL GRIP CAP: Le Baillif, luxury metal or personalized

Pistol grip caps
by Le Baillif



Ref. **CALLBSAN**



Ref. **CALLBCHE**



Ref. **CALLBBEC**



Ref. **CALLBCAN**

Luxury metal
pistol grip caps



Ref. **CALNOSAN**



Ref. **CALNOCHE**

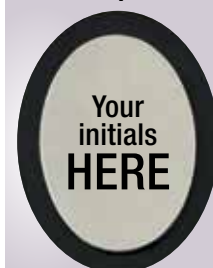


Ref. **CALNOBEC**



Ref. **CALNOCAN**

Personalized
pistol grip caps



Ref. **CALPE**

VERNEY-CARRON/DOZORME DAGGERS AND KNIVES



CLAUDE DOZORME



Bete Noire Dagger.

25 cm blade, 3 mm thick with sharp tip. The blade has been designed to be sturdy but also flexible enough in order to avoid to be broken and a large guard to stay safe. Supplied with a leather sheath.

Ref. : 1.15.190.70AL-VC.



Speedline Thiers liner with light olive wood handle and black blade.

Ref. : 1.90.142.89NSL-VC.



Veloce Thiers liner with light olive wood handle and steel blade.

Ref. : 1.90.142.89VL-VC.



HUNT WITH VERNEY-CARRON:



Verney-Carron

La Manufacture Verney-Carron

Hunting shotguns and rifles

54, Boulevard Thiers - BP 80072

42002 Saint-Etienne Cedex 1 - France

+33 4 77 79 15 00

email@verney-carron.com

www.verney-carron.fr



L'Atelier Verney-Carron

Bespoke shotguns and rifles

+33 4 77 81 01 21

www.l.atelier.verney-carron.fr



Ligne Verney-Carron (CILVC)

Hunting clothes and accessories

+33 2 38 43 43 58

www.ligne.verney-carron.fr



twitter.com/VerneyCarron_SA



facebook.com/VerneyCarron



youtube.com/c/VerneyCarronSA



VerneyCarron_officiel

www.verney-carron.com