



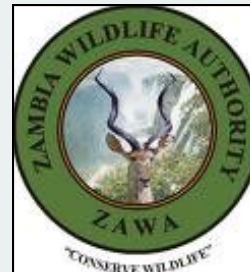
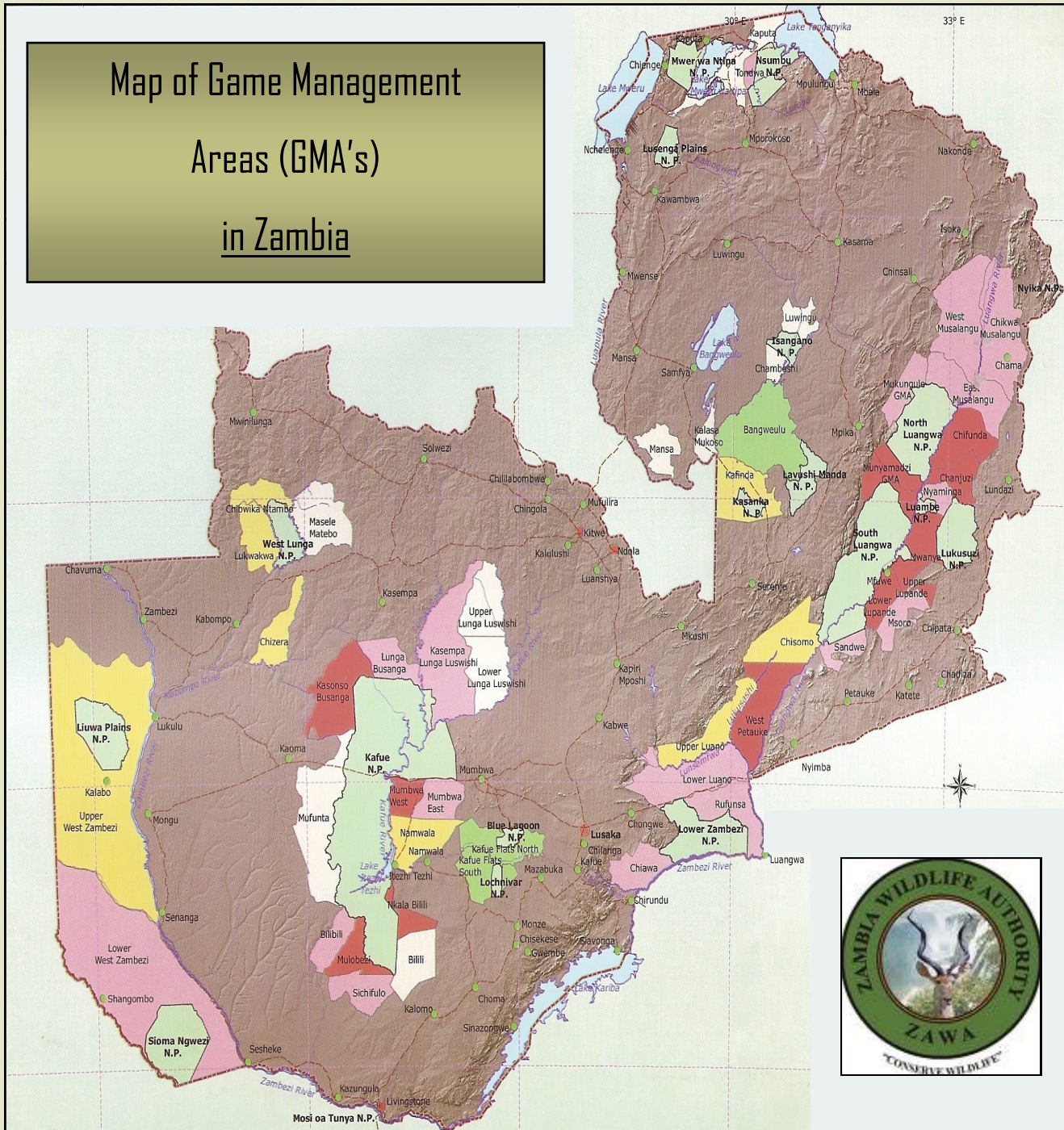
## Professional Hunters Association of Zambia

phazambia.com

## Hunt Zambia Now!

Sportsmanship « Conservation « Cooperation  
« Collaboration « Promotion of the welfare of  
members « Regulation

## Map of Game Management Areas (GMA's) in Zambia





## About Us

The Professional Hunters Association of Zambia (PHAZ) was founded as a non-racial, non-political body to represent Professional Hunters in Zambia. We strive to maintain the highest standards of professionalism amongst our members, and are dedicated to the ethical pursuit, and fair chase of the hunt. Our members are expected to provide the highest professional service to our International clients and to act in a responsible manner towards our great outdoors, the flora and the fauna.

With dwindling resources and loss of habitat for wildlife, we believe that hunting is one of the main pillars of conservation and that the management and utilization of wildlife is one of the most important tools in conserving wildlife for our children and future generations. To this end, we advocate and collaborate in every possible manner with the Government of Zambia and its Ministry of Tourism and Arts and Zambia Wildlife Authority in all matters concerning the conservation of Zambia's flora and fauna, which is consistent with the practice of hunting, and in general with safari activities.

### **CONTACT US:**

#### **Postal Address:**

**PO Box 50146**

**Lusaka, Zambia**

#### **email and Website:**

**prohunterszambia@gmail.com**

**www.phazambia.com**

## Hunting in Zambia

Zambia has 19 national parks and 36 adjacent Game Management Areas. Collectively, they cover 23 million hectares or about 30 per cent of the country. This doesn't include private fenced and unfenced conservancies that range from 1,000 hectares to over 30,000 hectares. The GMAs or concessions include a variety of



habitats with most big game species available. The national parks function as game reservoirs for surrounding areas through the natural movement of animals from areas of high density into areas of low density. Most GMAs are between 1,800 and 3,700 square miles. Game ranches and conservancies attract a lot of interest and offer old style hospitality, not to mention an amazing array of species including big game and wing shooting opportunities. Under Zambia's new wildlife policy, local communities along with the safari operators are responsible for the management of GMAs, regulated and supervised by ZAWA. The main economic benefit arising from wildlife management of the GMAs is revenue from fees for commercial safari hunting.

## Hunttable Species

**NOTE: The animals in bold can only be found in Zambia**

Baboon  
Buffalo (Cape)  
Bushbuck (Chobe)  
Bushpig  
Civet  
Crocodile (Nile)  
Elephant – Bull (Note: Temp ban in existence)  
Duiker (Southern Bush)  
Duiker (Yellow-backed)  
Duiker (Blue)  
Eland (Livingstones)  
Kudu (Southern Greater)  
Grysbok (Sharpes)  
Hartebeest (Lichtensteins)  
Hippo  
Hyena  
Impala (Southern)  
Jackal (Side striped)  
**Lechwe (Black)**  
**Lechwe (Kafue)**  
Lechwe (Red)  
Leopard ( NOTE: temporary ban in existence)  
Lion (NOTE: temporary ban in existence)  
Oribi  
Puku  
Reedbuck (Southern)  
Roan Antelope (Southern)  
Sable Antelope  
Serval  
Sitatunga (Zambezi)  
Tsessebe  
Warthog  
Waterbuck (Common)  
**Waterbuck (Crawshay Defassa)**  
Wildebeest (Blue)  
**Wildebeest (Cooksons)**  
Zebra (Burchells)

