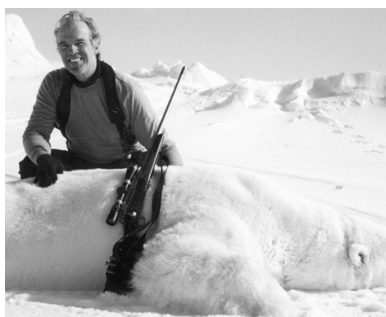


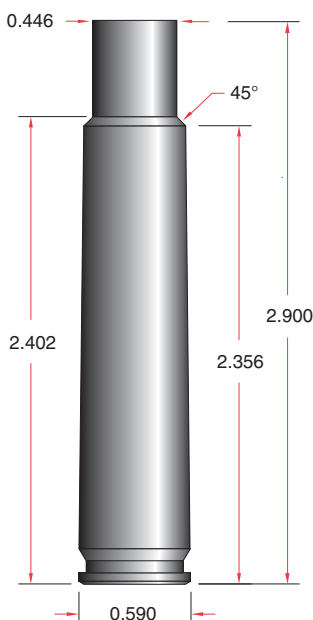
.416 Rigby

Introduced for magnum Mauser bolt rifles by John Rigby in 1912, the .416 Rigby proved to be the ideal dangerous game rifle for Africa. At the outset, factory loads produced about 2,350 fps with a 410-grain, .416-inch bullet for over 5,000 foot-pounds of muzzle energy, surpassing the time-honored .404 Jeffery by about 200 fps with a 400-grain bullet.



Presently, the only over-the-counter factory rifle that is chambered in the U.S. for the .416 Rigby is the Ruger Model 77 MKII Magnum. At nearly 10 pounds, it goes a long way in reducing the recoil with top loads.

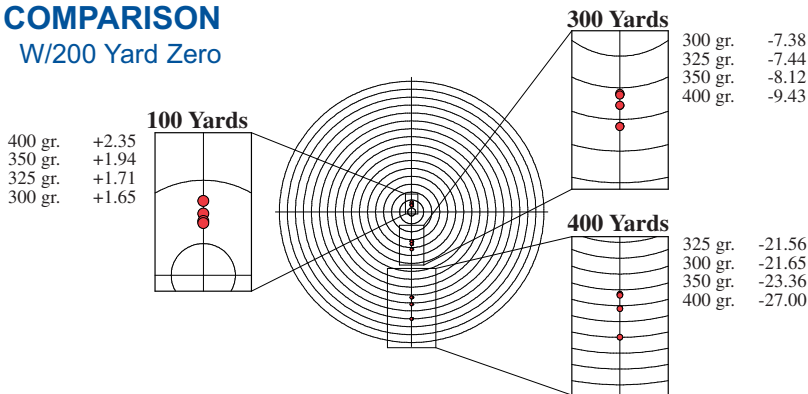
Photo of Johnny Bliznak



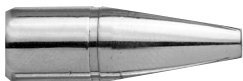
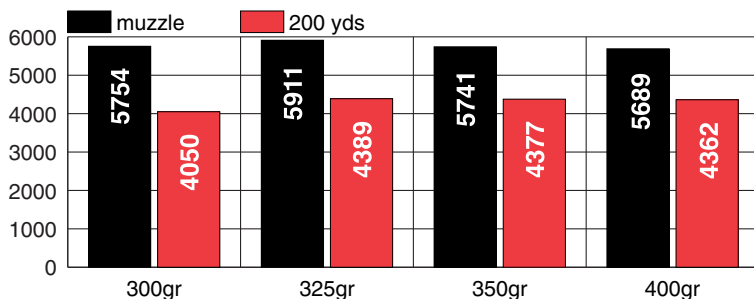
Case:	Parent Case:
Rigby	None
Primer:	Trim To:
Federal GM 215M	2.890"
Barrel:	
26"	

BULLET DROP COMPARISON

W/200 Yard Zero



BULLET ENERGIES



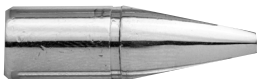
300-grain XFB

S.D. .248 B.C. .394

Suggested Bullet Use



Powder	Charge Weight (grains)	Velocity (fps)	Maximum Load	Velocity (fps)
XMR 4350	102.0	2767	107.0	2903
RL 19*	104.0	2825	109.0	2961
RL 22	106.0	2839	111.0	2973
H4350*	103.0	2807	108.0	2943
H4831	104.0	2784	109.0	2918
IMR 4831*	103.0	2799	108.0	2935



325-grain XFB

S.D. .268 B.C. .467

Suggested Bullet Use



Powder	Charge Weight (grains)	Velocity (fps)	Maximum Load	Velocity (fps)
XMR 4350	98.0	2641	103.0	2776
RL 19*	101.0	2762	106.0	2899
RL 22	105.0	2729	110.0	2859
H4350	100.0	2755	105.0	2893
H4831	103.0	2729	108.0	2861
IMR 4831*	100.0	2749	105.0	2886

XLC Coated X-Bullet data cannot be used with other bullets, including non-coated X-Bullets.

Maximum loads should be used with caution - Always Start With Minimum Loads.

* Recommended powder

.416 Rigby



350-grain XFB

S.D. .289 B.C. .521

Suggested Bullet Use



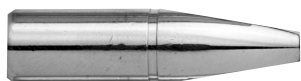
350-grain Solid

S.D. .289 B.C. .364

Suggested Bullet Use



Powder	Charge Weight (grains)	Velocity (fps)	Maximum Load	Velocity (fps)
XMR 4350*	95.0	2561	100.0	2696
RL 19	94.0	2559	99.0	2695
RL 22*	103.0	2578	108.0	2703
H4350*	97.0	2616	102.0	2751
H4831	101.0	2596	106.0	2724
IMR 4831*	96.0	2602	101.0	2737



400-grain XFB

S.D. .330 B.C. .546

Suggested Bullet Use



400-grain Solid

S.D. .330 B.C. .388

Suggested Bullet Use



Powder	Charge Weight (grains)	Velocity (fps)	Maximum Load	Velocity (fps)
RL 19	91.0	2354	96.0	2483
RL 22*	99.0	2433	104.0	2556
H4350*	93.0	2466	98.0	2599
H4831*	99.0	2430	104.0	2553
IMR 4831	91.0	2375	96.0	2505
IMR 7828	101.0	2374	106.0	2491

XLC Coated X-Bullet data cannot be used with other bullets, including non-coated X-Bullets.

Maximum loads should be used with caution - Always Start With Minimum Loads.

* Recommended powder

.416 Rigby



400-grain XLC

S.D. .330 B.C. .546

FOR MODERN BOLT RIFLES ONLY

Suggested Bullet Use



Powder	Charge Weight (grains)	Velocity (fps)	Maximum Load	Velocity (fps)
RL 19	99.0	2412	104.0	2633
RL 22*	101.5	2553	106.5	2673
H4831*	98.0	2479	103.0	2599
IMR 4831	97.5	2525	102.5	2648
IMR 4350*	93.0	2496	98.0	2624
MRP	100.0	2539	105.0	2660



400-grain XLC

S.D. .330 B.C. .546

FOR EXPRESS RIFLES

Suggested Bullet Use



Powder	Charge Weight (grains)	Velocity (fps)	Maximum Load	Velocity (fps)
RL 19	96.0	2312	101.0	2432
RL 22	98.0	2323	103.0	2442
H4831	95.0	2272	100.0	2392
IMR 4831*	94.0	2290	99.0	2412
IMR 7828	97.0	2308	102.0	2427
Som 385*	100.0	2307	105.0	2422
MRP*	97.0	2319	102.0	2439

XLC Coated X-Bullet data cannot be used with other bullets, including non-coated X-Bullets.

Maximum loads should be used with caution - Always Start With Minimum Loads.

* Recommended powder