



GAME TRACKERS AFRICA - ONDJAMBA SAFARIS – SOUTH AFRICA

Eastern Cape Safari Areas

.. operates various hunting areas across South Africa providing us with specie flexibility to meet different client needs. This allows us to tailor your safari to ensure the optimum experience, best fit and maximum time in the veld – “Live the African Legacy!”

Our **Eastern Cape** hunting areas are located between East London and Queenstown, in close proximity of Cathcart, and Pearston respectively. This secluded areas provides perfect natural habitat for most plains game species and will offer clients a safari experience of a life time, an exclusive experience.

The habitat in both areas consist of mixed biomes of grassland, dense woodland (Albany thicket) and Nama Karoo type of vegetation, providing perfect natural habitat for the game species you will encounter on your safari. More than 44 species of plains game are sustained on these areas including buffalo, hippo, sable, roan, eland, kudu, nyala, waterbuck, springbuck, red hartebeest, common and mountain reedbuck and many more. The unique terrain of rolling hills and deep valleys provides for great hunting. Spot and stalk from the high points on species such as kudu, nyala and Impala where the Plato's on top are open grassland for species such as eland, blesbuck and black wildebeest. These areas are best hunted from April through to end October

Area1 - This pristine 190 000 plus acre hunting area is located roughly 140 miles north of Port Elizabeth (Gqeberha). This unique area include conservancies, large areas of open land and wilderness, and large high fenced areas. Area 2 - 10 000 plus acre hunting area is located roughly 100 miles north of East London and 200 miles north East of Port Elizabeth - both far from the hustle and bustle where guests are greeted with the unique terrain of rolling hills with deep valleys allowing for great hunting.

YOU WILL FIND IT SO QUIET – YOU WILL BE ABLE TO HEAR YOURSELF THINK

After a hard day's hunting, you can retire to the comfort of one of two lodges with private rooms and en-suite bathrooms. You will be spoiled with excellent cuisine, soft drinks, local beers and wines. These gems are in secluded areas of South Africa where you will be able to listen to tales of exceptional hunts and create your own memories, continuing the traditions of Africa's most magnificent hunting grounds.

Client needs, species list and tailored hunting packages will direct the best fit area from our various hunting areas and concessions.

Facilities

- Luxury and comfortable chalets with en-suite bathrooms
- Swimming Pool
 - Lounge
 - Bar

Contacts - Piet Oosthuizen – email – piet@gametrackersafrica.com +27 83 296 2523

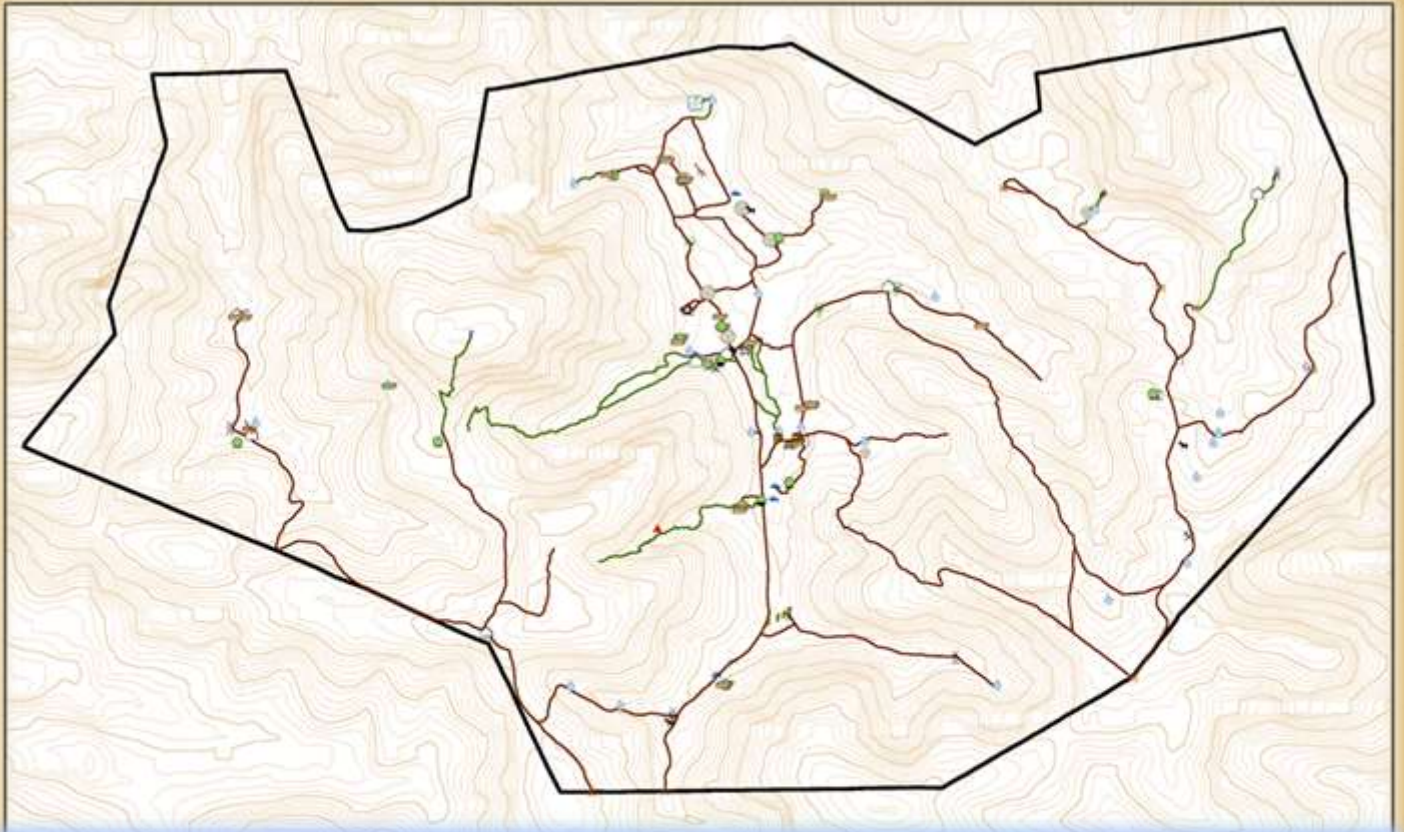
Jaco Oosthuizen – email – jaco@gtasafari.com/ Magdel Oosthuizen – email – magdel@gtasafari.com/
<https://www.gametrackersafrica.com/home/>

Area 1 – Lodge and Accommodation





Area 2 - Map, Lodges and Accommodation





General Landscape and Game



